

AGENDA

Meeting: Devizes Area Board

Place: Needham House, Victoria Road, Devizes SN10 1FA
(In the community room, please go right from reception and the room is on your right)

Date: Monday 5 September 2022

Time: 6.30 pm

Including the parishes of Bishops Cannings, Bromham, Bulkington, Cheverell Magna, Coulston, Devizes, Easterton, Erlestoke, Etchilhampton, Little Cheverell, Market Lavington, Marston, Potterne, Poulshot, Rowde, Seend, Stert, Urchfont, West Lavington, Worton.

The Area Board welcomes and invites contributions from members of the public. The chairman will try to ensure that everyone who wishes to speak will have the opportunity to do so.

If you have any requirements that would make your attendance at the meeting easier, please contact your Democratic Services Officer.

Please direct any enquiries on this Agenda to Tara Shannon, direct line 01225 718352 or email tara.shannon@wiltshire.gov.uk

All the papers connected with this meeting are available on the Council's website at www.wiltshire.gov.uk

Press enquiries to Communications on direct lines (01225) 713114 / 713115.

Wiltshire Councillors

Cllr Kelvin Nash, Devizes East (Chairman)
Cllr Iain Wallis, Devizes North (Vice-Chair)
Cllr Simon Jacobs, Devizes South
Cllr Laura Mayes, Bromham, Rowde and Roundway
Cllr Dominic Muns, The Lavingtons
Cllr Tamara Reay, Devizes Rural West
Cllr Philip Whitehead, Urchfont and Bishop Cannings

Recording and Broadcasting Information

Wiltshire Council may record this meeting for live and/or subsequent broadcast. At the start of the meeting, the Chairman will confirm if all or part of the meeting is being recorded. The images and sound recordings may also be used for training purposes within the Council.

By entering the meeting room you are consenting to being recorded and to the use of those images and recordings for broadcasting and training purposes. The meeting may also be recorded by the press or members of the public.

Any person or organisation choosing to film, record or broadcast any meeting of the Council, its Cabinet or committees is responsible for any claims or other liability resulting from them so doing and by choosing to film, record or broadcast proceedings they accept that they are required to indemnify the Council, its members and officers in relation to any such claims or liabilities.

Details of the Council's Guidance on the Recording and Webcasting of Meetings is available on request. Our privacy policy can be found [here](#).

Parking

There is limited parking in front of Needham House and some limited on street parking nearby. Follow the link to find details of [Devizes car parks](#).

Public Participation

Please see the agenda list on following pages for details of deadlines for submission of questions and statements for this meeting.

For extended details on meeting procedure, submission and scope of questions and other matters, please consult [Part 4 of the council's constitution](#).

The full constitution can be found at [this link](#).

For assistance on these and other matters please contact the officer named above for details

	Items to be considered	Time
1	<p>Welcome</p> <p>To welcome those present to the meeting.</p>	6.30pm
2	<p>Apologies for Absence</p> <p>To receive any apologies for absence.</p>	
3	<p>Minutes (<i>Pages 1 - 8</i>)</p> <p>To approve and sign as a correct record the minutes of the meeting held on 20 June 2022.</p>	
4	<p>Declarations of Interest</p> <p>To receive any declarations of disclosable interests or dispensations granted by the Standards Committee.</p>	
5	<p>Chairman's Announcements (<i>Pages 9 - 42</i>)</p> <p>To receive the following announcements through the Chairman:</p> <ul style="list-style-type: none"> • Engagement and Partnerships Team Structure • Electric Vehicle Charging Points Webinar • Annual Canvass • Post 16 Skills and Participation Offer • Update on behalf of the Wiltshire Centre for Independent Living (Wiltshire CIL) • Shared Lives Wiltshire 	6.35pm
6	<p>Partner Updates (<i>Pages 43 - 62</i>)</p> <p>To receive updates from the following partners:</p> <ul style="list-style-type: none"> • Wiltshire Police • Police and Crime Commissioner • Fire and Rescue Service • Healthwatch Wiltshire • Integrated Care Board (formerly CCG) – including update on Devizes Health Centre • Schools updates • Town and Parish Councils • Devizes Indies • Devizes Sustainability Working Group • Devizes Opendoors • Devizes and District Foodbank 	6.45pm
7	<p>Devizes ASB partnership</p> <p>To receive an update on the work of Devizes ASB partnership.</p>	7.15pm

8	Wilts FA's summer 'Roots & Shoots' programme	7.40pm
	To receive an update on Wilts FA's summer 'Roots & Shoots' programme.	
9	Open Floor	7.55pm
	Residents are invited to ask questions of their local councillors.	
10	Local Highways and Footpaths Improvements Group (LHFIG) <i>(Pages 63 - 88)</i>	8.00pm
	To consider the update and any recommendations arising from the Local Highways and Footpaths Improvements Group (LHFIG).	
11	Air Quality and Sustainable Transport <i>(Pages 89 - 92)</i>	8.05pm
	To receive any updates from the Devizes Air Quality and Sustainable Transport Group and approve any funding recommendations.	
12	Youth Updates	8.10pm
	To receive any update on youth work in the area and consider the following application for youth grant funding.	
	<ul style="list-style-type: none"> • Bromham Youth Club, £2,682.00, towards Bromham Youth Club. • West Lavington Youth Club, £5,000.00 towards West Lavington Youth Centre. 	
	To note the following Youth grant already awarded under the delegated authority of the CEM:	
	<ul style="list-style-type: none"> • Wiltshire County Football Association, £1,000.00 towards Devizes Youth Football Project. 	
	Further details on the grant applications can be seen in the grant report under item 15.	
13	Health and Wellbeing Group	8.20pm
	To receive an update on the Devizes Health and Wellbeing Group and consider the following application for Older and Vulnerable Adults funding.	
	<ul style="list-style-type: none"> • Devizes Rotary, £500.00 towards the HWB Showcase 2022. 	
	Further details on the grant application can be found in the grant report under item 15.	
14	Community Engagement Manager Update	8.25pm

To receive any updates from Andrew Jack, Community Engagement Manager.

15 **Area Board Funding** (*Pages 93 - 98*)

8.30pm

To consider the following applications to the Community Area Grants Scheme:

- Cycle Friendly Devizes, £500.00, towards a new gazebo to promote sustainable travel options.
- Devizes Development Partnership, £2,500.00, towards Devizes CCTV.
- Devizes Assize Court Trust, £5,000.00 towards planning for the future of Devizes Assize Court.

To note the following Community Area Grant already awarded under the delegated authority of the Community Engagement Manager:

- Sustainable Devizes, £750.00 towards the Devizes Community Fridge.

16 **Urgent items**

Any other items of business which the Chairman agrees to consider as a matter of urgency.

17 **Close**

8.45pm

The next ordinary meeting of the Area Board will be held on 5 December 2022.

Devizes Area Board

MINUTES OF THE DEVIZES AREA BOARD MEETING HELD ON 20 JUNE 2022 AT NEEDHAM HOUSE, VICTORIA ROAD, DEVIZES, SN10 1FA.

Present:

Cllr Kelvin Nash (Chairman), Cllr Iain Wallis (Vice-Chair), Cllr Simon Jacobs,
Cllr Dominic Muns, Cllr Tamara Reay and Cllr Philip Whitehead

Wiltshire Council Officers

Dominic Argar (Assistant Multimedia Technician)
Andrew Jack (Community Engagement Manager)
Tara Shannon (Senior Democratic Services Officer)
Leo Penry (Democratic Services Officer)

Town and Parish Councillors

Devizes Town Council
Potterne Parish Council
Seend Parish Council
Bishop Cannings Parish Council

Total in attendance: 30

72 **Election of Chair 2022/23**

Nominations were sought for a Chairman for the forthcoming year. On the nomination of Councillor Iain Wallis seconded by Councillor Simon Jacobs, it was,

Resolved:

To elect Councillor Kelvin Nash as Chairman of Devizes Area Board for the municipal year 2022-23.

73 **Election of Vice-Chair 2022/23**

Nominations were sought for a Vice-Chairman for the forthcoming year. On the nomination of Councillor Tamara Reay seconded by Councillor Simon Jacobs, it was,

Resolved:

To elect Councillor Iain Wallis as Vice-Chairman of Devizes Area Board for the municipal year 2022-23.

74 **Welcome**

The Chairman welcomed everyone to the meeting and invited Members to introduce themselves.

75 **Apologies for Absence**

Apologies were received from Cllr Laura Mayes.

76 **Minutes**

The minutes of the last meeting were presented for consideration, and it was,

Resolved

To approve and sign as a correct record the minutes of the meeting held on 7 March 2022.

77 **Declarations of Interest**

Cllr Nash declared a non-pecuniary interest in the Kennet and Avon Canal Trust grant, as a volunteer and member. Cllr Wallis declared a non-pecuniary interest in the Open Doors Grant, by virtue of being a trustee of the organisation.

78 **Chairman's Announcements**

The Chairman referred the meeting to the written updates in the agenda pack. In regards to taxi driver recruitment attention was drawn to the fact that taxi drivers could just do school drop offs and picks up.

79 **Partner Updates**

In addition to the written partner updates in the agenda pack the following verbal updates were given:

Sustainable Devizes

Graham Martin gave an update on the Sustainability Day. This included an overview of the key priorities: active travel, waste reduction and biodiversity. As well as routes to achieving them through engaging with local people and businesses to create a strong and sustainable community. A key point raised was that Sustainable Devizes were looking at creating a legal entity to support their goals. Another goal that was highlighted was the plan to set up a new Community Fridge as a way to reduce food waste.

The Board thanked Sustainable Devizes, and all involved for their hard work.

Devizes Opendoors

Noel Woolrych gave an update on Opendoors, covering their impact and success in getting people into safe housing. He thanked the Area Board for the grant Opendoors had received previously towards their shed. The presentation also described their current grant application for a new door to replace a broken one.

The Board recognised the important work done by Devizes Open Doors.

80 **Area Board Update**

The Community Engagement Manager, Andrew Jack, provided an update on the area board review which has taken place and changes to area boards which are being implemented as a result, for example the new grant funding criteria. This is detailed in the PowerPoint (which can be found as a supplement to the agenda).

In response to questions, it was clarified that an application for urgent funding would count as one of the two applications that an organisation can make in one year. Also addressed was the change in match funding and the change to prevent Town and Parish Councils from applying for capital funding, though they could still apply to the two revenue funding schemes: Youth and Older & Vulnerable People. The Wiltshire Community Foundation was highlighted as a resource to support groups to source funding schemes.

81 **Devizes Area Board Priorities and Projects**

The Community Engagement Manager, Andrew Jack, provided an update on the priorities for 2022/23, as detailed in the attached PowerPoint. They were reviewed by the Board, and it was,

Resolved:

- **To acknowledge the progress update from the 2021/22 local priorities work.**
- **To adopt the suggested priorities for the forthcoming year as shown at Appendix B and appoint lead Members to those areas as follows**
 - **Climate Change and the Environment: Cllr Tamara Reay**
 - **Children and Young People: Cllr Dominic Muns**
 - **Older or Vulnerable People: Cllr Simon Jacobs**
 - **Local Economy: Cllr Iain Wallis**
 - **Community Safety: Cllr Kelvin Nash**
- **To appoint lead councillors to priority working groups as outlined in appendix C.**
 - **Local Highways and Footpaths Improvements Groups (LHFIG)**

- **Chair - Councillor Dominic Muns**
- **Devizes Health and Wellbeing Group**
 - **Chair – t.b.c.**
 - **Councillor Simon Jacobs – lead member**
- **Devizes Air Quality & Sustainable Transport Group**
 - **Chair – Councillor Tamara Reay (also lead member)**

82 **Appointments to Outside Bodies and Working Groups**

Resolved:

- a) **To appoint Members as Lead representatives to Outside Bodies as set out at Appendix A;**

Devizes Leisure Centre – Cllr Tamara Reay and Cllr Philip Whitehead

Devizes & District association of the Disabled Executive Committee (Nursted Centre) – Cllr Kelvin Nash

Devizes Development Partnership – Cllr Iain Wallis

- b) **To appoint Cllr Dominic Muns as lead Councillor on the LHFIG.**

- c) **To note the Terms of Reference for the LHFIG as set out in Appendix B. (page 51-54)**

83 **Queens Baton Relay**

Detail was provided on the upcoming Queens Baton Relay which will come through Devizes marketplace on Tuesday the 5th of July at 8am. It was recommended that people stay away from major roads and watch from the marketplace or along the canal. For more information people were directed to the Town Council website.

84 **Wiltshire Museum, Eric Ravilious exhibition and update on Assize Court**

An update was received from David Dawson of the Wiltshire Museum on their Eric Ravilious exhibition and on the Devizes Assize Court project. There were 12,211 visitors in total, and it was explained that the museum recorded the postcodes of visitors to measure their tourism impact on Devizes. The calculation estimates how much people spend in a town based on how long they spend at a museum. It showed that the exhibition had a positive economic impact on Devizes, thus showing a return on the investment by Wiltshire Council and Devizes Town Council.

David Dawson described the museum's next exhibition on Hardy's Wessex in partnership with other museums. He also updated the Board on the status of the Assize Court. The building was now owned by a charitable trust, and they had been successful in the first stage of application for lottery funding for regeneration. There were also plans to regenerate the Devizes Wharf Area alongside the work on the Assize Court.

Councillors thanked the museum for their hard work on these projects.

85 **Open Floor**

The issue of pigeons and excessive pigeon mess near local shops at Little Britox was raised. This was acknowledged and it was clarified that this issue would be raised as a question at the next Town Council meeting.

There was also a question about when EV charge points would be made available in Devizes. An exact date could not be given but work was being done with Sustainable Devizes to organise a forum focused on EV charging. Work was also being done by the Town Council Sustainability Working Group.

Attention was also drawn to car racing on Station Road and the risk posed by ash dieback on this road. Both issues were being looked into.

86 **Community Area Transport Group (CATG) / Local Highways and Footpaths Improvements Group (LHFIG)**

Cllr Dominic Muns provided an update on the changes to Community Area Transport Groups (CATG) into Local Highways and Footpath Improvement Groups (LHFIG), as detailed in the PowerPoint. Key points included that the budget had doubled for the improvement tasks but would not rollover if unspent.

The recommendations arising from the LHFIG were considered and it was,

Resolved:

- **To note the discussions from the LHFIG meeting of 28th April**
- **To confirm the nine high priority schemes agreed by LHFIG**
- **To confirm LHFIG's contribution to new parking restrictions, Duck Street, West Lavington: 75% of £5,000**
- **To confirm LHFIG's contribution to additional street lights, Roundway Park, Devizes: 75% of £5,000**
- **To confirm LHFIG's contribution to new direction signage for Devizes Opendoors: 75% of £2,000**

Cllr Wallis abstained from the vote due to his connection with Opendoors.

87 **Air Quality and Sustainable Transport**

Cllr Tamara Reay provided an update from the Devizes Air Quality and Sustainable Transport Group as detailed on the PowerPoint. Key points included the significant progress on the Devizes Gateway, with involvement from National Rail a promising development.

Devizes Development Partnership were thanked for their work on the Devizes Gateway. Then questions were addressed including the timeline, which could be as quick as 4/5 years. In response to questions, it was clarified that £500 million of funding was to cover all projects within the Restoring Railways Scheme, not just Devizes. The location was also queried, and it was clarified that two sites were being assessed. The risk of rat runs was acknowledged, and the Cabinet Member for Highways had been approached to pre-emptively tackle this issue. Parishes were encouraged to engage with the process and were assured that the Board was working to ensure that Devizes Gateway brought only positive impacts.

More detail can be accessed at:

[Restoring your Railway Fund programme update - GOV.UK \(www.gov.uk\)](https://www.gov.uk/government/news/restoring-your-railway-fund-programme-update)

Resolved:

To note the discussions from the AQ&ST meeting of 9th May.

88 **Youth updates**

Cllr Dominic Muns gave an update, focusing on provision of activities for young people in the Devizes area. It was mentioned that a side effect of good youth provision is a reduction in antisocial behaviour. The impact of the pandemic was raised as well as the difficulty in providing activities posed by the spread of young people due to the rural nature of Wiltshire. In order to tackle this youth activities in the form of a road show were being considered. Success in West Lavington was highlighted due to the newly appointed Youth Worker and attention was drawn to the importance of volunteers in providing youth activities and support.

Cllr Muns introduced the youth grant applications and representatives of the organisations applying for grants spoke in support of their applications. After consideration by the Board it was,

Resolved:

- **To grant Devizes Budo Club, £2,500 towards re-booting the club, up-skilling coaches and training younger members.**

To note the following youth grant already awarded under delegated authority of the Community Engagement Manager:

- **Bishops Cannings Jubilee Committee were granted, £500 towards The Bishops Cannings Jubilee Celebration.**

89 **Health and Wellbeing Group / Older People**

Cliff Evans, from the Health and Wellbeing Group (HWBG) gave an update. He described the success of the Trolley Olympics as a fun and inclusive event and the intention to run the event again in the future. The plans for the showcase were also outlined with the event planned to take place on the 10th of September 2022 and to also include activities.

This was followed by an update from Albert Wooldridge on the Devizes Men's Shed. This included the severe impact that the pandemic had on the Men's Shed, as it had to close for 15 months. It was announced that the Men's Shed has re-opened but was still limited due to social distancing. Despite this there were plans to offer taster sessions to those who are not members. It was expressed that the proposed new build for the shed would better enable the taster sessions and other opportunities.

The Board then considered the grant application for Older and Vulnerable Adults Funding, it was:

Resolved:

- **To grant Carer Support Wiltshire, £2,457.50 towards the creation of a new Bereavement Help Point in Devizes.**

To note the following applications already awarded under the delegated authority of the Community Engagement Manager:

- **Bromham Parish Council was granted, £500, towards the Platinum Jubilee Bromham Senior Citizens lunch.**
- **Devizes Rotary was granted, £500, towards the Devizes Trolley Olympics 2022.**

90 **Area Board Funding**

Representatives of the organisations applying for grants spoke in support of their applications. It was,

Resolved:

- **To note the grant to Seend Lye Recreation Field, £5,000 towards their Carbon Challenge 2023 which was allocated under delegated authority.**
- **To grant Devizes Bowmen Archery Club, £4,000 towards provision of hard standing in waterlogged ground at Green Lane for Devizes Bowmen Archery Club.**
- **To grant Kennet and Avon Canal Trust Enterprise Limited, up to £3,000 towards MV Kenavon Venture emergency exit routes. Upon clarification from the Community Engagement Manager that repair**

work was not eligible for capital funding but work to create new emergency access was eligible. Cllr Nash abstained from the vote.

- **To grant Worton and Cheverell Youth Football Club, £1,449.50 towards Worton and Cheverell Youth FC additional goals for football training.**
- **To grant Devizes Opendoors, £1,197 towards new secure front doors. Cllr Wallis abstained from the vote.**

The new deadlines for grant applications were announced:

- Monday 8th August 2022
- Monday 7th November 2022
- Monday 6th February 2023

91 **Urgent items**

There were no urgent items.

92 **Close**

The Chairman thanked everyone for attending and announced that the next meeting of the Area Board would be held on 5 September 2022.

(Duration of meeting: 6.30pm - 8.50 pm)

The Officer who has produced these minutes is Leo Penry of Democratic Services, direct line 01225 718541, e-mail leonora.penry@wiltshire.gov.uk

Press enquiries to Communications, direct line ((01225) 713114 or email communications@wiltshire.gov.uk

Briefing Note
Engagement and Partnerships Team
Structure
August 2022

Service : *Leisure, Culture and Communities*
Further Enquiries to: *Rhys Schell, Service Manager, Engagement and Partnerships*
Date Prepared: 22/08/2022
Direct contact: rhys.schell@wiltshire.gov.uk

Engagement and Partnerships Team

The new staffing structure for the Engagement and Partnerships team comes into place from 1 September and introduces three officer levels of support to local communities and Area Boards. Officers will work collaboratively across community areas, however, locally named contacts remain available for Councillors, partners and residents to directly engage with. The service will work with communities in an innovative and proactive way and empower them to do even more for themselves and to deliver to the Wiltshire Council Business Plan. A brief overview of the respective duties are set out below.

- **Strategic Engagement and Partnerships Manager**

The six Strategic Engagement and Partnership Managers (SEPMs) will hold overall responsibility for Area Board delivery and the development of the local Area Board work plan in conjunction with the local Councillors. The SEPMs are the main points of contact for local Councillors, strategic partners, community volunteers and leaders. Each SEPM will lead an organisational theme, which includes children and young people, equality, diversity and inclusion, the environment, economic regeneration and older and vulnerable adults. The SEPMs will drive this area forwards across communities and develop exciting link ups between council services and the community to provide excellent information, insight and evidence sharing between parties.

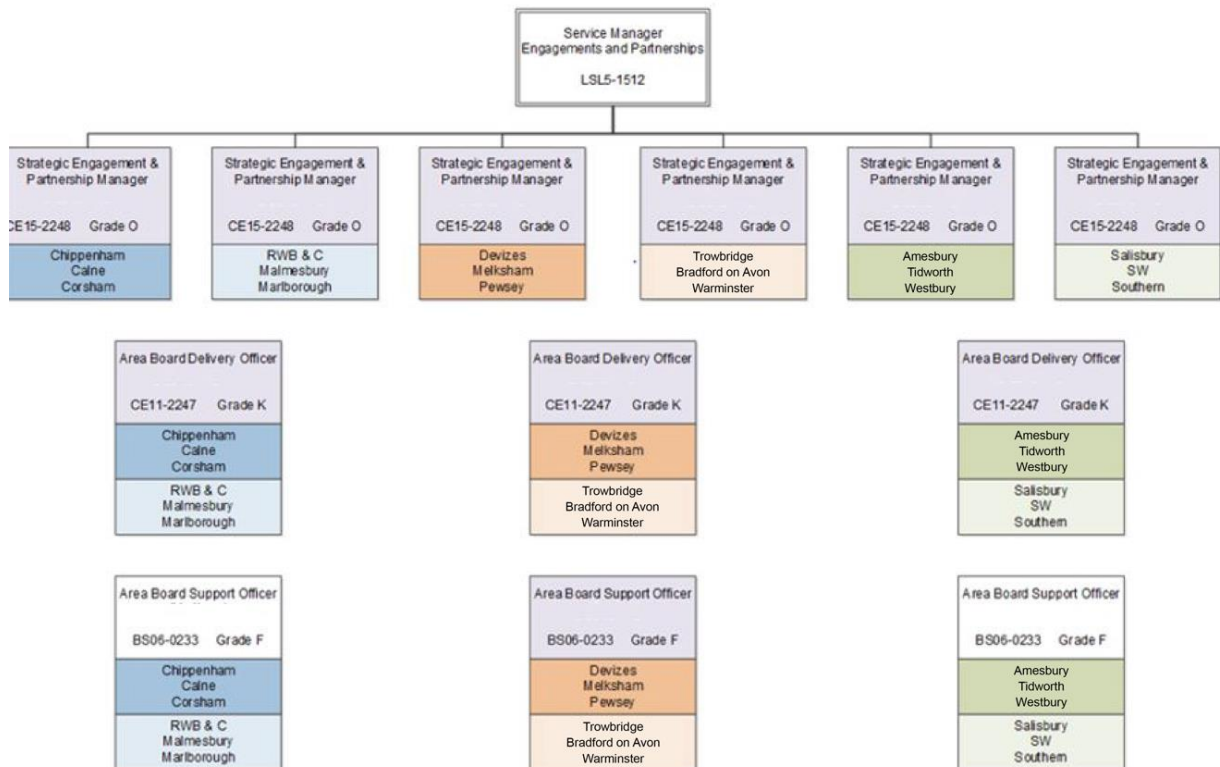
- **Area Board Delivery Officer**

Three dedicated officers that facilitate and support Area Board delivery in an innovative way. The delivery officers will build exceptional relationships with the voluntary and community sector and other key local partners to facilitate projects and initiatives that support the objectives of the Area Board work plans. They will be actively involved in Area Board business meetings, engagement activities, events and working groups to deliver exceptional local and organisational outcomes.

- **Area Board Support Officer**

Three Area Board Support Officers will oversee and effectively implement all grant funding processes. This includes eligibility assessment, reporting, payments, impact analysis, budget monitoring and audit. The Area Board Support Officers will collate and assess data on behalf of the team, facilitate regular communication through online platforms such as Our Community Matters and respond to resident enquiries. They report to the Strategic Engagement and Partnership Managers.

Structure Visual



The post holders are as follows:

- Andrew Jack, (01225 713109 or andrew.jack@wiltshire.gov.uk) Strategic Engagement and Partnerships Manager - Malmesbury, Marlborough, Royal Wootton Bassett and Cricklade
- Ros Griffiths, (01225 718372 or ros.griffiths@wiltshire.gov.uk) Strategic Engagement and Partnerships Manager - Corsham, Chippenham and Calne
- Liam Cripps, (01225 713143 or liam.cripps@wiltshire.gov.uk) Strategic Engagement and Partnerships Manager - Bradford on Avon, Trowbridge and Warminster
- Richard Rogers, (07771547522 or richard.rogers@wiltshire.gov.uk) Strategic Engagement and Partnerships Manager - Melksham, Devizes and Pewsey
- Graeme Morrison, (01225 713573 or graeme.morrison@wiltshire.gov.uk), Strategic Engagement and Partnerships Manager - Westbury, Amesbury, Tidworth
- Karen Linaker, (01722 434697 or karen.linaker@wiltshire.gov.uk) Strategic Engagement and Partnerships Manager - South West, Salisbury, Southern Wiltshire
- David Holker, Area Board Support Officer (North)
- Catherine Russell, Area Board Support Officer (South)

The three vacant Area Board Delivery Officer roles and the central Area Board Support Officer role are currently being recruited to.

Briefing prepared by: Rhys Schell, Service Manager, Engagement and Partnerships

Report Date: 22/08/2022

Electric Vehicle Charging Points webinar

When: Wednesday 14th September 2022 at 5.30pm on Microsoft Teams

An opportunity to learn more about Wiltshire Council's approach to electric vehicle (EV) charging infrastructure

- Current EV charging infrastructure plan
- Next EV strategy
- Grants and the Office of Low Emissions Vehicles (OLEV) process
- An opportunity to ask questions and understand how to overcome any barriers

Please email climate@wiltshire.gov.uk to book a place on the webinar and receive the link

Area Board Briefing Note – Annual Canvass

Service:	Electoral Services
Date prepared:	20 June 2022
Further enquiries to:	Caroline Rudland Head of Electoral Services
Direct contact:	elections@wiltshire.gov.uk

Each year the statutory Annual Canvass process takes place between June - November. This is an audit to ensure the electoral register is accurate and all those people entitled to vote are registered.

Forms will be sent to all properties in July. We encourage everyone to check the information is correct and use the contact details on the form to update their details as appropriate, preferable by using the online or telephone service as this is a quicker and efficient option.

Some households will be **required** to respond where other households only need to if there is a change in the information shown on the form. Full details will be explained on the form.

If you can disseminate the information within your parishes, and encourage households to respond as soon as possible, it will save further reminders being sent.

The final process for those households that do not respond to the initial and reminder form, is to employ canvassers to door knock to encourage a response. This will take place during September.

However, hopefully the number of properties to door knock can be significantly reduced if households respond to the forms so, please encourage your communities to do so.

**Area Board Briefing Note –
Post 16 Skills and Participation Offer**

Service:	Post 16 Skills and Participation
Date prepared:	8th August 2022
Further enquiries to:	Catherine Brooks – Employment and Skills Officer
Direct contact:	Catherine.brooks@wiltshire.gov.uk

The Post 16 Skills and Participation team are on hand to support young people aged 16 – 17 years who are NEET (Not in Education, Employment or Training) or at risk of becoming NEET.

The EET (Education, Employment or Training) service will work 1-1 with young people to support them and help them understand the local offer, whether that is Sixth Form, College, Traineeships or Apprenticeships. Or other local programmes which offer employability support, confidence building, life skills, functional skills in Maths and English for example.

With the aim to re-engage them back into Education, Employment or Training.

You can find more information and how to refer a young person – or yourself on our Work Wiltshire website – www.workwiltshire.co.uk/young

The Work Wiltshire website also holds a vast amount of information around all things Employment and Skills, for the wider community, no matter your age for example apprenticeship information or for those with barriers to work and support for Ukraine refugees.

Follow our Social Media pages for fresh content and local opportunities.

Twitter - @WorkWiltshire

Instagram - @young_workwiltshire – for young people

Any questions or more information? Please email Catherine Brooks, Employment and Skills Officer

Catherine.brooks@wiltshire.gov.uk

Wiltshire Centre for Independent Living is a Disabled People's user led organization.

Our aim is to ensure that all people in Wiltshire can live the life they choose as valued members of their community.

We support people to live independently and well and to have a voice. Our main activities are:

- Supporting people who receive direct payment from Wilts Council to employ their own care
- Promoting PA opportunities, with a PA register and promotional events (PAs provide paid care and support so that people can live independently)
- Providing varied opportunities for disabled people to have a voice and co-produce local services.
- Supporting all our communities to be inclusive and welcoming through the Make Someone Welcome campaign
- Providing awareness raising sessions on disability issues and wider community development work
- Providing a community connector service, working alongside people in the community who want to get back to living well after they have experienced issues that have prevented this

We have several partners who commission us to do this work, including Wiltshire council, Wilts CCG and local Primary Care Networks (G.P practices)

All our work starts with this question: 'what does a Good life look like to you and what do you need to live it'. We have used this question in our forums, consultations and all our 1:1 work, and we now have over 2000 responses from disabled people in Wiltshire. Disability is defined broadly and includes physical disability, dual sensory, mental health issues, learning disability and Autism.

The PowerPoint slide pack is a synthesis of all the responses to this question, providing a unique knowledge base for decision makers and planners. The messages are simple, yet we know that we aren't achieving these things for all our residents. Please do use the findings in whatever way you find useful and contact us if you would like any further information/ conversations:
mary@wiltshirecil.org.uk

Report author: Mary Reed

Organisation name: Wiltshire Centre for Independent Living

Date: 23/06/22



What do people need to live their good
life?

In groups, in the community and in one-to-one conversations we have asked over 2000 people these 3 questions:

- What does a good life look like to you?
- What have you got to live that life?
 - What do you now need?



We want what you want

Everyone wants the same things to live well: a home, equal and meaningful relationships, to be valued and have purpose, to be hopeful about the future.

People need choice and control to live good, independent lives.

Everyone can be supported to live their good life.

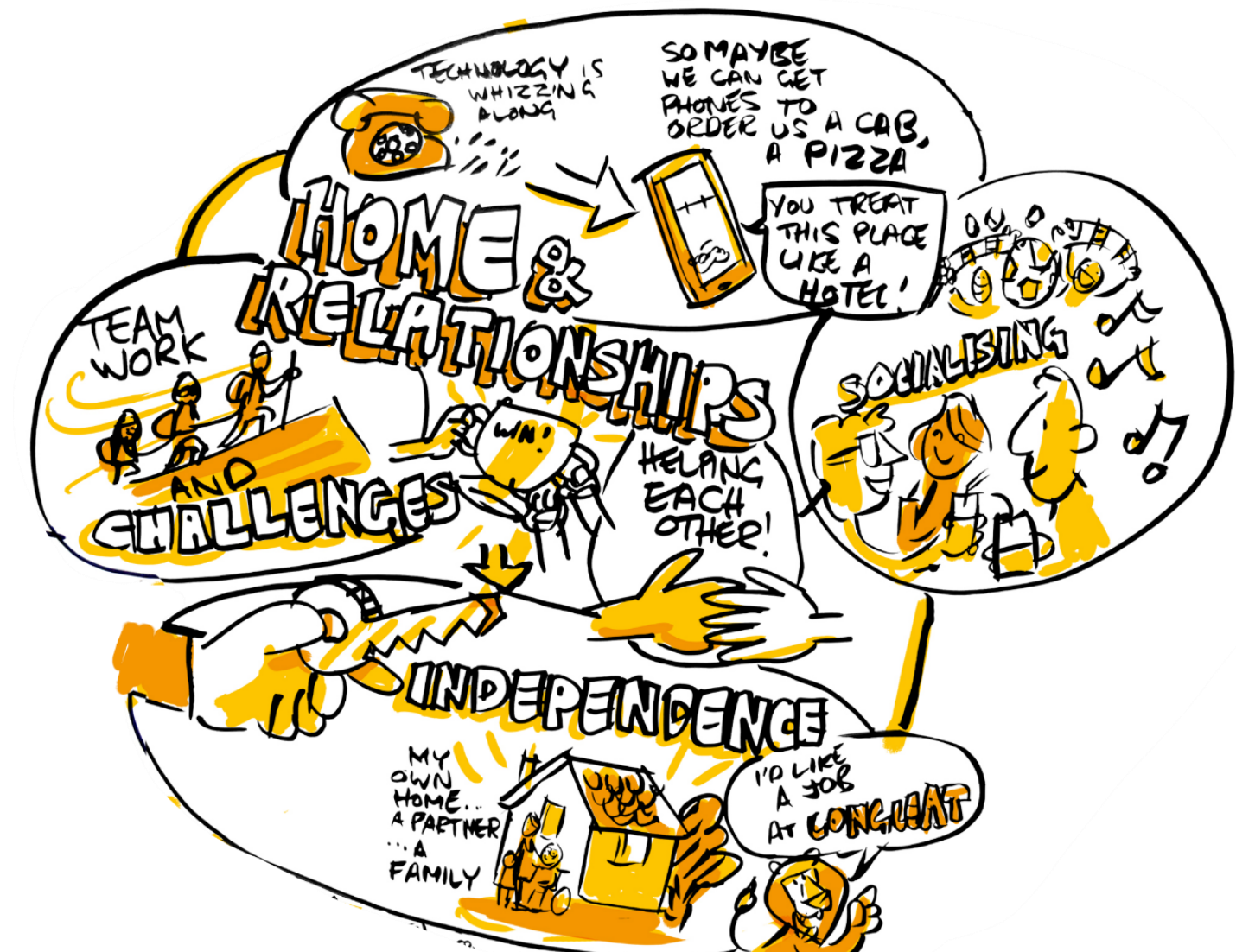


Homes not institutions

People want to live in a place called home, where they have choice and control over all aspects of their daily lives.

The homes people live in need to fit with who they are, this might mean living with others or on their own.

A house is not a home if people don't feel that they belong and are safe in the place they live.



Relationships REALLY matter

At the heart of a good life are meaningful relationships.

Having people around us that we trust, and love can support us all to live well

Relationships work best when people value each other as equals.



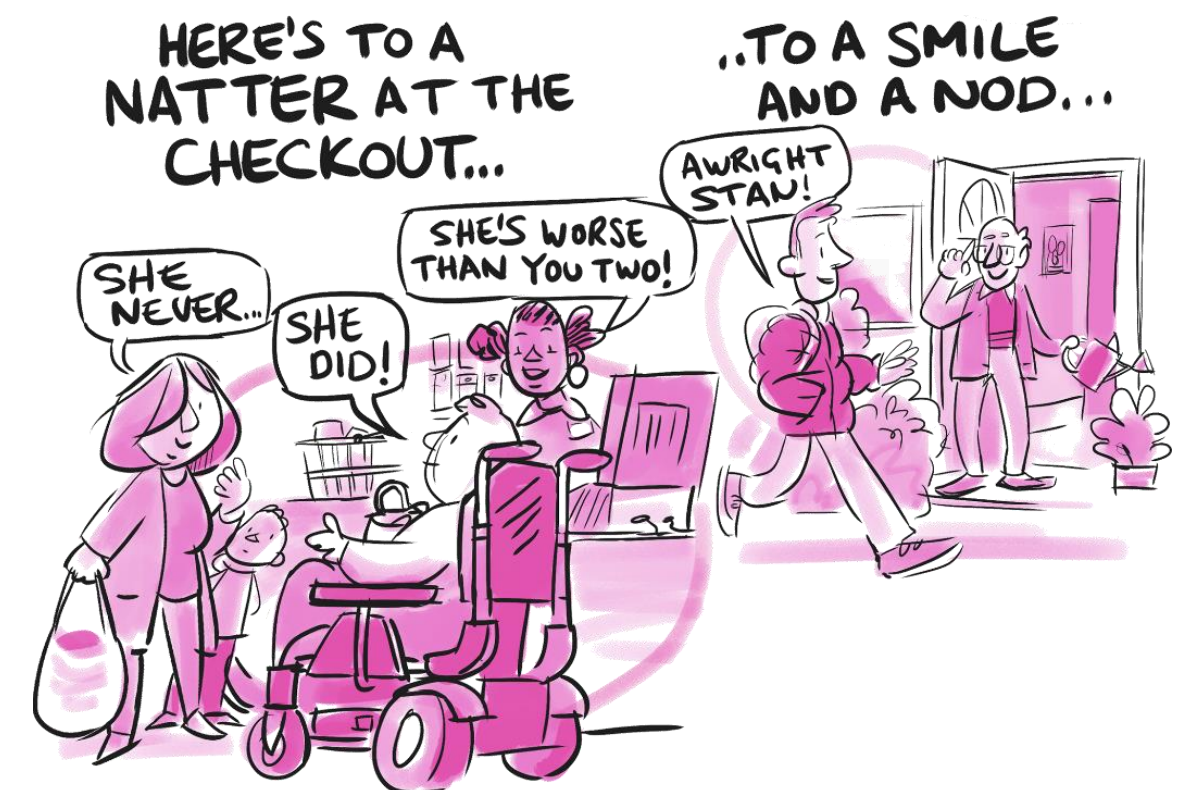
Real connection in real communities

Community is people not places.

People want to be part of their community; a valued and active member.

People might need some support to 'Access their community'. Support works best when it helps people to meet with others, help each other out, and enjoy each others company.

Communities need to be fully accessible, accepting and safe for people



We may well need support, but we want the right support

Independent living does not mean living without support.

Support works best when provided by people that are liked, known, and trusted and is led by the people receiving it, enabling them to get on with their day to day lives.

Support to help people get back on track works best when its about relationship building and maintaining.

The right support at the right time can stop people finding themselves in a crisis or unable to cope.





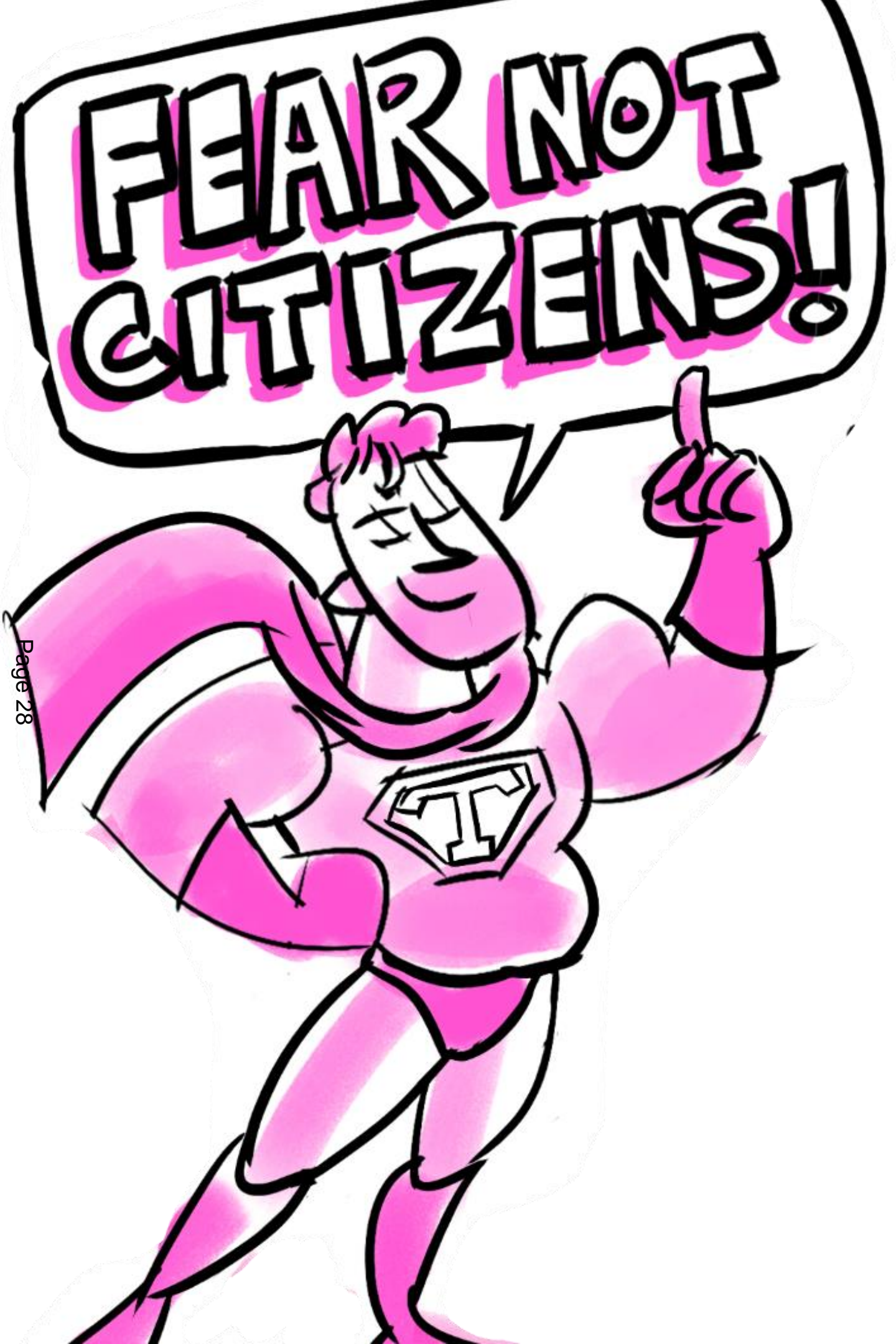
We are not there yet

‘Written off for being different’

There are many examples of people feeling excluded from normal everyday life, which includes our places of work and our communities.

We now need to act and ensure that every Wiltshire resident and every professional involved in the health and social care system play their part to ensure that people get to live the lives they deserve.





We start today!

You have the power to create positive change!

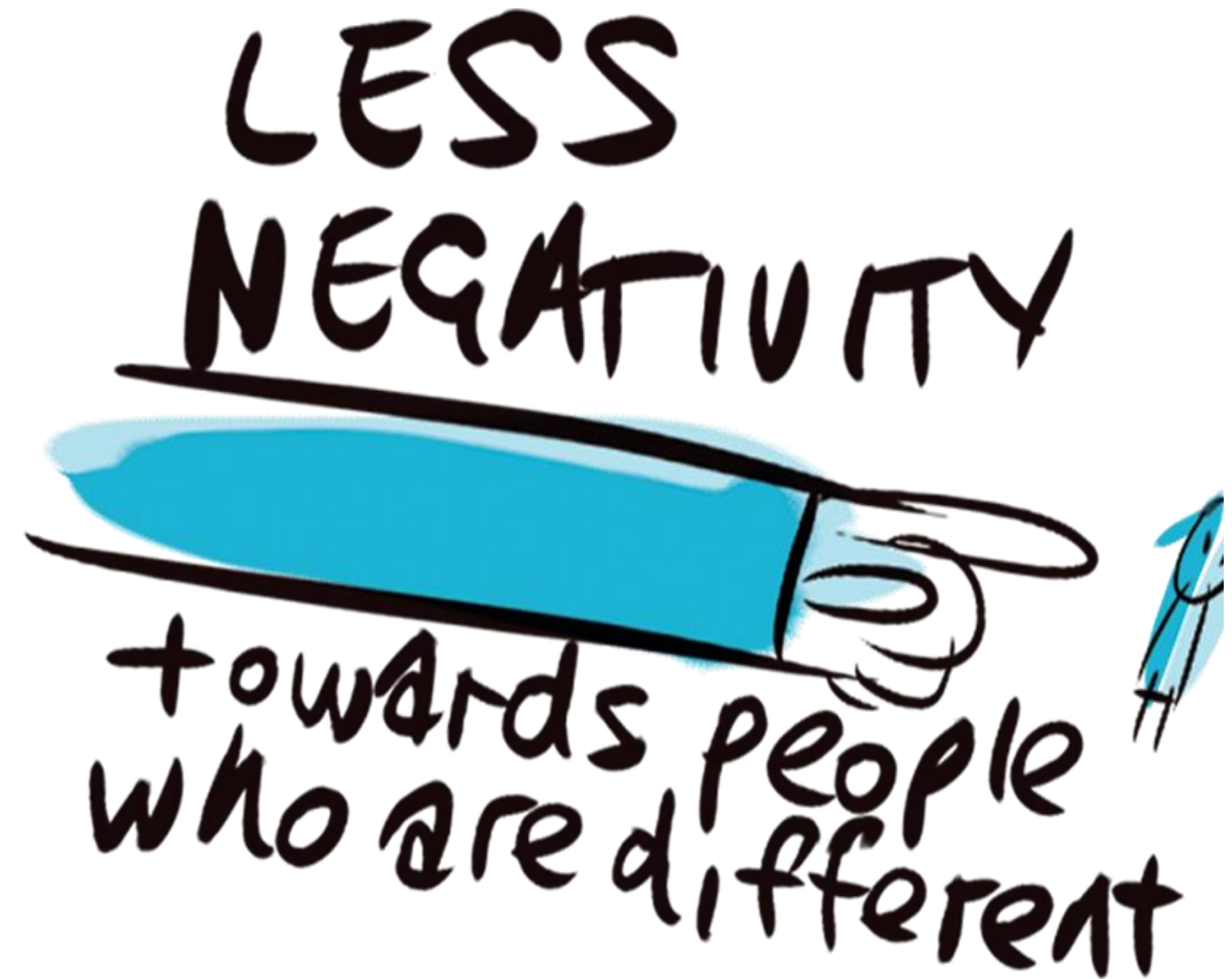
As local change makers you can influence, design and develop your 'community' and make sure everything in it works for you.

We are here to make a difference

Be hopeful, be ambitious...

We need BIG IDEAS

Think risky, think 'good trouble'





Live as part of a family, within the carers home,
and receive support, care and companionship.



Shared Lives offers long-term and short-term placements, respite and home from hospital provision for people who require support. This includes those with mental health needs or learning disabilities, physical impairments, and elderly people.

Call: 01380 826451

Email: sharedlives@wiltshire.gov.uk

 @SharedLivesWilts

Wiltshire Council



**Do you live in Wiltshire?
Do you have a spare room?**



If you would support and care for an adult, within your own home, then we would like to hear from you!

Work flexibly, receive £371-£571 per week, and make a real difference to the people you support.

Call: 01380 826451

Email: sharedlives@wiltshire.gov.uk

f @SharedLivesWilts

Wiltshire Council



Shared Lives



Shared Lives
Wiltshire

The **Shared Lives Service** helps people to live as part of a family, within the carers home, where they receive the support or care that they need.

The service places adults who have mental health needs or learning disabilities, physical impairments, or are elderly, or those who, for a variety of reasons, cannot manage to live without support.

This presentation will discuss:

- **Information on the service**
- **Becoming a Shared Lives Carer**



- **We are CQC registered:**
- CQC say that nationally SL services consistently out-perform other forms of social care.

Inspected and rated

Good



Wiltshire Council

The Scheme

Existed in Wiltshire for 40 years +, where **care and support for up to three people** is provided in the home of the Shared Lives carer.

Provision of **short term, respite** and **home from hospital provision, long term** and sometimes **daytime support**.

“ There are lots of rewards of being a SL carer, you can see the difference in someone as they are growing and learning new things and you take pride in the fact that you have supported them to grow ”

“I like being a Shared Lives carer as I enjoy a challenge”

“I’m doing something for somebody else and it is so rewarding”

“you can have the best times like when someone learns something new or you enjoy days out together”



Shared Lives
Wiltshire

Inspected and rated

Good



Wiltshire Council

Customer feedback



"Dolly and Kevin make me part of our family and involve me in activities every day. I love being part of our family."

"It's nice to have a tidy and clean house and a great social life."

"I love having my own room and I love that the dogs are always with me."

Inspected and rated

Good



Wiltshire Council

Becoming a Shared Lives carer

- **If you would support and care for an adult within your own home, on a short-term or long-term basis, then we would like to hear from you!**
- As a Shared Lives carer, you would welcome an adult with care or support needs into your home on a short term or long-term basis. You would support them to develop their skills, independence, and social inclusion.
- Carers can be families, couples or individuals, and we recruit people with a wide range of skill sets and life experiences.
- No qualifications are needed, and carers could combine this role with other work commitments. However, a willingness to share your life with others, and provide care and support with enthusiasm, motivation and commitment is important.
- You will receive guidance and support from our team when you are matched with someone who suits your circumstances and lifestyle. This is to ensure that Shared Lives is an enjoyable, fulfilling and valuable experience for all.



Shared Lives Wiltshire

**Do you live in Wiltshire?
Do you have a spare room?**

If you would welcome an adult with care or support needs into your home on a short-term or long-term basis, then we would like to hear from you!

No qualifications are required, but a willingness to share your life with others, and provide care or support with enthusiasm, motivation and commitment is essential.

Following an approval process, you will receive a weekly fee and work as a self-employed professional.

Call: 01380 826451

Email: sharedlives@wiltshire.gov.uk

 @SharedLivesWilts

Inspected and rated

Good



Wiltshire Council



Banding, Fees and Placement Set-up

As a Shared Lives carer, you could make a **real difference** to the people you support. Following an approval process, you will receive a weekly fee **[£371- £571 per week]** and work as a self-employed professional.

These 3 bands are based on the needs of the customers. This is a **WEEKLY FEE** paid to the carer

£371 (paid breaks £12.60)

£445 (paid breaks £16.80)

£571 (paid breaks £24.11)

What will you provide to the customer?

- Board and lodgings – 3 meals a day
- Furnished bedroom
- Access to whole of the house (except others bedrooms and any out of bounds areas such as work office etc).
- And support with...

Personal care Taking medication Budgeting Inclusivity in family life	Planning activities Laundry Access to health care and community companionship and ongoing relationships.
---	---



Wiltshire Council



Shared Lives
Wiltshire



[Shared Lives Wiltshire – ITV News](#)

Inspected and rated

Good



Wiltshire Council



**Shared Lives
Wiltshire**



**Amy Smith
Manager**



**Mercedes Apps
Team Leader**



**Sally Roberts
Officer**

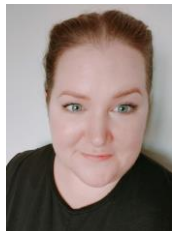


**Lauren Wright
Officer**



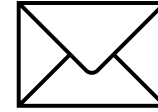
**Jane Linkson
Officer**

**Kate Dale
Officer**



**Tara Lagor
Assistant**

Contact Us



sharedlives@wiltshire.gov.uk



01380 826451



@SharedLivesWilts



Wiltshire Council

WILTSHIRE POLICE



Page 43

Area Board Update

Devizes Community Policing Team
September 2022



Agenda Item 6

Your CPT - Devizes

Inspector: Al Lumley

Neighbourhood Sergeant: Vacant

Neighbourhood Officers:

PC Eleanor Porter

PC Sarah Hardwidge (Acting Sergeant)

PC Nicky Crabbe

PCSOs:

Emily Johnson, Jonathan Mills (Pewsey)

Mark Braithwaite, Emily Johnson, Melissa Camilleri (Marlborough)

Andrew Maclachlan, Paula Yarranton, Kelly Watts (Devizes)

Performance – 12 Months to June 2022

Force

- Wiltshire Police recorded crime reports a YoY increase of 10.5% in the 12 months to June 2022 and continues to have one of the lowest crime rates in the country per 1,000 population.
- Wiltshire Police has seen a 18.1% increase in violence without injury crimes in the 12 months to June 2022.
- In June 2022, we received:
 - 9,427 '999' calls, which we answered within 8 seconds on average;
 - 11,522 '101' calls, which we answered within 16 seconds on average;
 - 12,522 CRIB calls, which we answered within 2 minutes and 27 seconds on average.
- In June 2022, we also attended 1,718 emergency incidents within 9 minutes and 36 seconds on average.

Crime Type	Crime Volume	% of Crime
Totals	42,401	100.0
Violence without injury	7,456	17.6
Violence with injury	6,268	14.8
Criminal damage	5,139	12.1
Stalking and harassment	4,172	9.8
Public order offences	4,104	9.7
Other crime type	15,262	36.0

Devizes CPT

Crime Type	Crime Volume	% of Crime
Totals	3,234	100.0
Violence without injury	502	15.5
Violence with injury	438	13.5
Criminal damage	379	11.7
Stalking and harassment	316	9.8
Public order offences	297	9.2
Other crime type	1,302	40.3

Stop and Search information for Devizes CPT

During the 12 months leading to May 2022, 120 stop and searches were conducted in the Devizes area of which 61.7% related to a search for controlled drugs.

During 78.3% of these searches, no object was found. In 27% of cases, an object was found. Of these cases 68.3% resulted in a no further action disposal; 18.3% resulted in police action being taken; 9.2% resulted in an arrest.

Of the stop and search subjects who defined their ethnicity:

- White – 93 stop and searches
- Black or Black British – 9 stop and searches
- Asian or Asian British – 6 stop and searches
- Mixed – 4 stop and searches

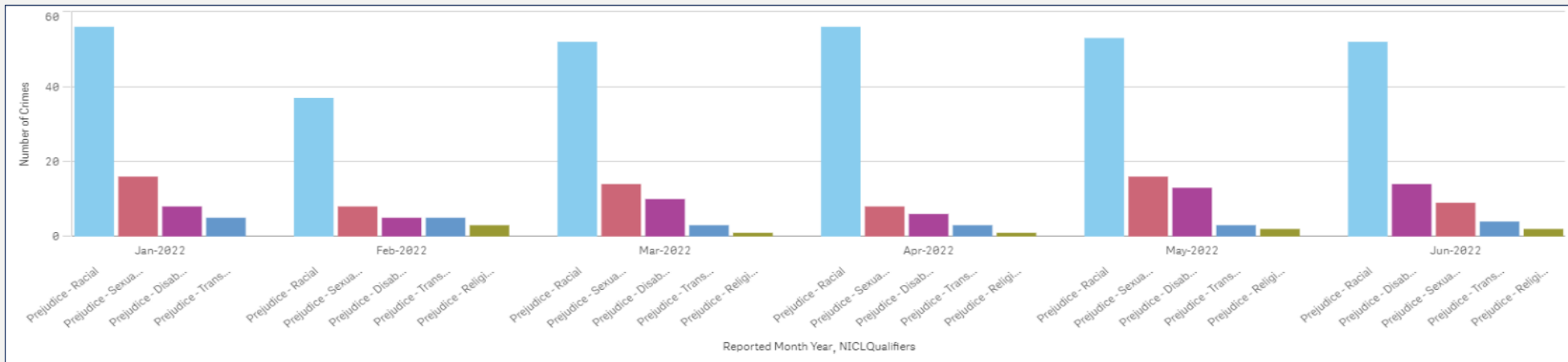
Performance – Hate Crime Overview

Force

Hate Crime is reporting as stable, with a slight loss of seasonality since the impact of Covid. Volumes are now reporting flatter across the year. Year on year reporting increases in Transgender and Sexual Orientation related hate which follows National trends.

Work by the Hate Crime Silver Scrutiny Panel on hate crime video to raise awareness of Hate Crime and how to report it, including details surrounding how the Criminal Justice System responds to it is ongoing. There is an increased focus on Out of Court Disposal outcomes relating to Hate Crimes.

Force Hate Crime (6 months to June 2022)



Devizes CPT

	Number of Crimes	Change (number)	Change (%)
Total	50	-19	2.0%
Prejudice – Racial	36	-20	2.9%
Prejudice – Sexual orientation	8	4	166.7%
Prejudice - Disability	6	-2	-50.0%
Prejudice - Religion	1	-1	-50.0%
Prejudice - Transgender	0	0	0.0%

Year on year comparison June 2021 to June 2022 (note: an individual crime can be tagged with more than one prejudice type e.g. sexual orientation & transgender)

Local Priorities & Updates

Priority	Update
Roots & Shoots	Multiple partners have come together with Wiltshire Police and Wiltshire County FA to bring a new football inspired initiative to the young people of Devizes. We are a few weeks into the 15 week initiative that takes place at the Green Lane Playing Fields. Attendance has been good, increasing each week at the time of writing. The new initiative will enable invited young people to engage in positive football activities each Friday evening during the school holidays and beyond. The partners, including Aster Group, Sovereign Housing, Devizes Town Council, Youth Offending Team and Wiltshire County Football Association have contributed to the costs of running the scheme including astro turf boots for those who needed them. Morrisons in Devizes have kindly donated drinks and snacks for the players.
Station Road Car Park	The partial closure order placed on the car park has been in effect for some time now. The police have continued to patrol the area to enforce the order, with few issues being found or reported. The vast majority of people have taken heed to the notices, with the few that haven't being given appropriately strong words of advice. To date, no arrests have been necessary. The serious collision remains under investigation. Multiple people have been arrested and remain on bail. At this time we are not looking for anyone else but the case continues.
Hewitt Court Murder	Following the tragic murder of Wayne Sheppard outside Hewitt Court, we continue in our efforts to build a strong case. The principle offender remains on remand. Local teams are working with the community to reassure them, and ensure the investigation team has everything it needs. We are unable to comment further at this time as this is an ongoing case.
Op Siege	Victims of residential burglaries will now be visited by a member of the local neighbourhood team to be given a 'SelectaDNA' kit and shown how to use and register it. These kits mark valuable property with a special material that leaves a specific trace behind which can help identify stolen items. SelectaDNA kits can be bought online, but the company have teamed up with Wiltshire Police to ensure victims of crime don't become repeat victims. The neighbourhood team provide crime prevention advice and material during the same visit. Feedback from the public so far has been very positive and our staff have been working hard to promote the initiative.

Useful Links

For more information on Wiltshire Police's performance please visit:

- PCC's Website - <https://www.wiltshire-pcc.gov.uk/>
- HMICFRS Website - <https://www.justiceinspectorates.gov.uk/hmicfrs/police-forces/wiltshire/>
- Police.uk - <https://www.police.uk/pu/your-area/wiltshire-police/>
- For information on what crimes and incidents have been reported in the Devizes Community Policing Team area, visit <https://www.police.uk/pu/your-area/wiltshire-police/devizes/> to view a crime and incident map and find links to more detailed data

Get Involved

Keep up to date with the latest news and alerts in your area by signing up to our **Community Messaging service** – www.wiltsmessaging.co.uk

Follow your CPT on social media

- [Devizes Police Facebook](#)
- [Devizes Police Twitter](#)
- [Marlborough Police Facebook](#)
- [Marlborough Police Twitter](#)
- [Pewsey Police Facebook](#)
- [Pewsey Police Twitter](#)

Find out more information on your CPT area at: www.wiltshire.police.uk and here www.wiltshire-pcc.gov.uk



The screenshot shows the Wiltshire Police website. At the top left is the Wiltshire Police logo. To its right is a search bar with the text "How can we help you?". Below the search bar is a navigation menu with five items: "Report", "Tell us about", "Apply or register", "Request", and "Feedback". Below the menu is a breadcrumb trail: "Home > About us > CPTs". The main heading is "Devizes CPT". Below this is a paragraph: "CPT Devizes covers the areas of Devizes, Marlborough and Pewsey and surrounding areas." This is followed by two paragraphs of contact information and a link to a map of crimes in the Devizes area.



HMIC PEEL 2021/22 Report Area Board Update

July 2022



About HMICFRS and PEEL

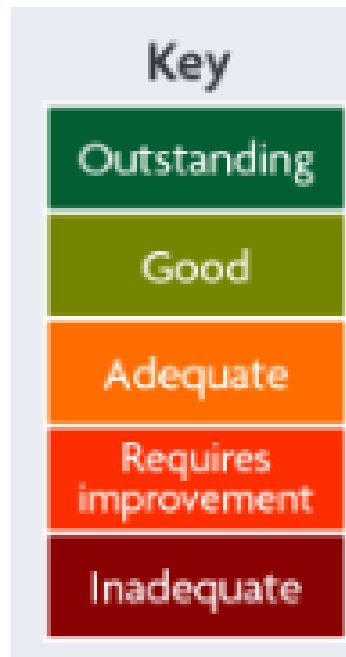


HMICFRS is Her Majesty's Inspectorate of Constabulary and Fire & Rescue Services. They inspect police forces across England, Wales and Northern Ireland as well as fire and rescue services in England.

Their principal aim is to promote improvements in policing and fire and rescue services to make everyone safer.

Within policing they do this via a rolling programme of inspections related to specific themes such as domestic abuse or terrorism to at a more holistic level through their PEEL (Police Efficiency, Effectiveness and Legitimacy) inspection process.

If serious concerns are identified as part of the PEEL inspection, HMICFRS can move forces into a process called Engage (similar to OFSTED's special measures) where additional scrutiny and support is put in place to facilitate rapid improvements in areas of concern.



Wiltshire Police PEEL 2021/22

Area	Grading
Preventing crime	Requires Improvement
Investigating crime	Requires Improvement
Treatment of the public	Requires Improvement
Managing offenders	Requires Improvement
Developing a positive workplace	Requires Improvement
Responding to the public	Inadequate
Protecting vulnerable people	Inadequate
Good use of resources	Inadequate

The inspection (carried out in January 2022), identifies pockets of good practice but has shown that the service we provide to the public is inconsistent and failing to provide a routinely high standard. We are determined to address this – **improving service delivery is the Chief Constable’s highest priority.**

Our response

Whilst hugely disappointing for all our officers and staff, we take the concerns raised very seriously and are already taking comprehensive action to address these:

- **Establishing a dedicated action taskforce:** re-setting and improving the fundamentals of public service from point of contact through to justice outcomes
- **The Chief Constable has personally outlined his expectations to over 1,500 officers and staff** regarding the need to collectively reset and return to the core basics of pride in service and pride in standards
- **Focused ongoing training for all front-line officers and staff**, and critically, with supervisors/sergeants
- **Enhanced training has been delivered** to Contact Centre staff on identifying vulnerability threat, harm and risk in every public interaction
- **We are introducing a Force-wide Volume Crime Team:** further professionalism in investigating crime across neighbourhoods, keeping victims informed and working with the Crown Prosecution Service to deliver better outcomes.

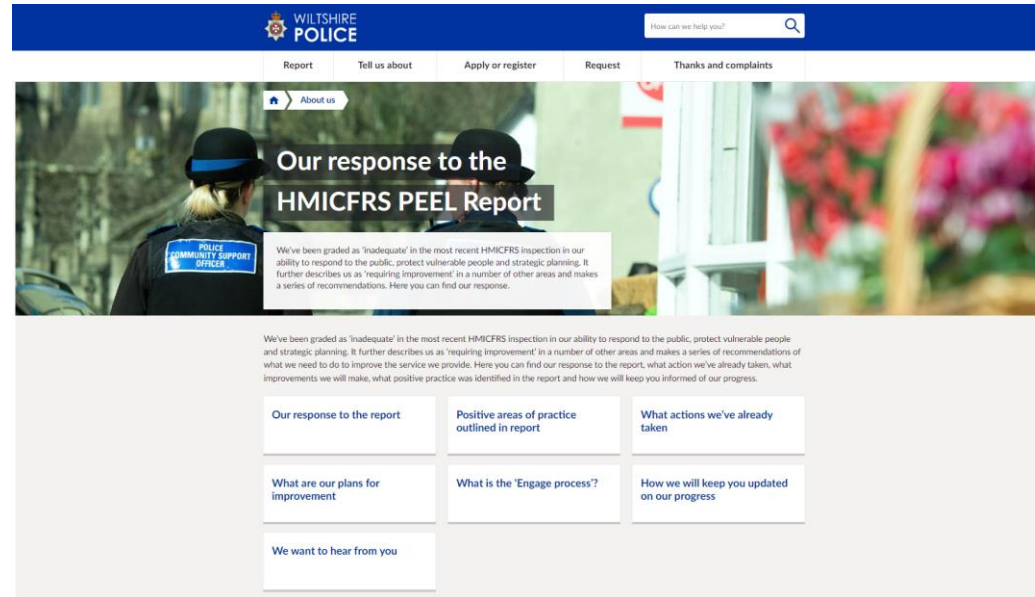
Transparency

We are committed to demonstrating to the public that we are making progress against the HMICFRS PEEL recommendations

A dedicated page on our website has been built to house all information and updates on our response.

This includes a link to the full report, our response to the report and detail on how we plan to make progress

The page is accessible via the homepage of www.Wiltshire.police.uk



Summaries of the Chief Constable's quarterly updates to the Police Performance Oversight Group will be published on our site

Championing what matters to you through difficult times

It's been another challenging year dominated by the consequences of Covid-19, but we've continued to be your champion for health and social care services and make sure your voice is heard by those who plan and run services.

Championing What Matters to You, our annual report, showcases how we've been making a difference during difficult times.

The year in numbers

In the past year (2021-22):

- **4,400** people have shared their experiences with us.
- **7,140** people have accessed our advice and information online or contacted us with questions about local support.
- We have published **12** reports and made **78** recommendations to services to make health and care better in Wiltshire.
- We have **40** volunteers helping us to carry out our work, giving **1,480** hours of their own time.

Looking ahead

As ever the work doesn't stop there. We'll be looking at how our survey, which gathered the views of patients and staff on access to GP services during Covid-19, will bring about improvements to services across the south of England.

Our priorities for 2022/23 are:

- **Primary Care** – continuing the previous year's work.
- **Mental health** – with a focus on



- learning disabilities and autism.
- **Children and young people** – sexual health.
- **Hospital discharge** – exploring the links between discharge and social care.

Catharine Symington, Interim Manager at Healthwatch Wiltshire, said: "Thank you to everyone who has taken the time to share their experiences with us during what has been another difficult 12 months.

"With the introduction of the new Integrated Care System on 1 July, there are lots of changes expected within the health and care system and we want to make sure that local people continue to play a key role in helping to shape services.

"Please keep sharing your experiences with us so that we can champion your views and needs both locally and nationally."

Update for Wiltshire Area Boards

August 2022

Winter Planning

As our System continues to experience unrelenting demand challenges and operational pressures, we are continuing to work with our partners to deliver existing demand management and capacity improvement plans. We are monitoring the impact of these plans at both a System and Place level and will take the learning into the development of our plans for the coming winter. One important aspect of our future plans is the delivery of a Virtual Ward model. Virtual Wards allow patients to get the care they need at home safely and conveniently, rather than being in hospital.

Fiona Slevin-Brown, Wiltshire Place Director, is providing Executive leadership across the BSW programme to enable successful roll out of this programme across all three Places.

In addition, our winter plans will encompass the continuation of additional bed capacity to support wider adoption of discharge to assess. Further work to support the timely discharge of patients out of hospital will continue with specific focus on securing additional domiciliary care provision in South Wiltshire. This will contribute to the much needed capacity required to help with the expected challenges for this coming winter period.

Primary Care Update

In March 2022 NHS England published 'Enhanced Access for General Practice' guidelines, the aim is to improve access to GP services outside of core hours.

The new service which goes live from 1st October 2022 will provide more appointments for patients between the hours of 6.30pm – 8pm Monday to Friday, and 9am to 5pm on Saturdays. Details on how this will be delivered at a Primary Care Network and practice level will be communicated directly with local registered patients in the coming weeks.

Connecting with our Communities (CWOC)

The Wiltshire Integrated Care Alliance CWOC work stream is focused on empowering our communities and ensuring their voices are heard through the design and delivery of the work of the Alliance, paying particular attention to inclusion of our most vulnerable and marginalised residents. This workstream will be informed by the latest NHSE guidance outlining the revised legal responsibilities for statutory NHS

organisations <https://www.england.nhs.uk/publication/working-in-partnership-with-people-and-communities-statutory-guidance/>

A CWOC away day is organised for the 30th August at County Hall, with invites being extended to representatives of the Wiltshire VCSE, and local statutory partners. The purpose of the away day is to work towards strong community engagement, including the planning of listening events within various communities within the Wiltshire footprint.

Dr Amanda Webb appointed to Chief Medical Officer

Amanda has served as Swindon Locality Clinical Chair for BSW since 1 April 2020 having previously been a member of the Governing Body of Swindon CCG and Clinical Director for the Brunel 1 Primary Care Network.

She is dedicated to improving population health and wellbeing and to addressing inequities in health and life opportunity for the people of BSW. Amanda has a particular interest in workforce retention and career development and founded the national Phoenix GP Programme.

Amanda trained at both Cambridge and Oxford University, before qualifying as a GP in 2012 and joining Westrop Medical Practice in 2014 with specialist clinical interests in paediatrics and women's health.

The process of appointing a Wiltshire Health Care Professional Lead Role is underway, and details of the successful candidate will be shared when appointed.

Keep up to date

Those wanting to keep up to date with developments with the BSW Integrated Care System can sign up to receive The Triangle - a monthly newsletter about the work of BSW Together. The public facing publication contains a mix of news and updates showing how the BSW ICS is working to improve the health and wellbeing of local people, tackle health and care inequalities and improve services for everyone.

A sign-up form is available here <https://bswtogether.org.uk/news-events/the-triangle/>

Update for Devizes Area Board

August 2022

Devizes Health Centre

Progress is continuing with the build of the new health centre located in Marshall Road, Devizes. The new flagship centre is due to open in Autumn 2022 and will bring an extensive range of services from several different health and care providers together under one roof.

Devizes Health Centre will be leading the field in sustainable design, as one of a small number of 'Net Zero' health facilities across England. The site will have an energy EPC rating of A+, and will utilise green technology, such as heat pumps and solar panels to generate electricity and heat to serve the building.

As well as replacing the services at the existing Devizes Community Hospital, the centre will house a new on-the-day primary care team and become the home for a range of community-based services. Patients will be able to access a wide range of services, including:

- Physiotherapy
- Podiatry
- Diabetes
- Orthopaedics
- Speech and Language Therapy
- Pace and Oxygen
- Dietetics
- Audiology (for example, hearing tests)
- Maternity
- Contraception and Sexual Health
- Retinal Screening
- Blood Tests
- Neurology
- Paediatrics
- Urology
- Continence
- Care of the Elderly
- Memory Assessments and Dementia Services
- Mental Health Out Patient Appointments (pre-booked appointments only)

Devizes Health Centre can be easily reached by car, with those travelling in their own vehicle welcome to use the large on-site car park. People arriving by public

transport are advised to use the local 1A bus service, which stops at the adjacent Greenlane Hospital.

Further information and more detailed frequently asked questions can also be found by visiting www.bswccg.nhs.uk/news-events/integrated-care-centres/devizes-health-centre

Partner Update

Update from	Cheverell Magna Parish Council
Date of Area Board Meeting	05.09.2022

Headlines/Key Issues

- Cheverell Magna has appointed a Locum Clerk to assist the Parish Council.

- Five new members were co-opted at a Parish Council meeting held on 6th July. The Parish Council is grateful for the support of Councillor Dominic Muns whilst the council was without a full complement of elected members.

- Advertising for a Parish Clerk and RFO to work 30 hours per month

- Working with Wiltshire Council Highways and Wessex Water to review flooding events within the village.

Heather Parks FSLCC
Locum Clerk

Devizes Community Area Transport Group – 5th July 2022 – Agenda

IN PROGRESS	APPROVED – AWAITING SLOT	AWAITING UPDATE - X	AWAITING REMOVAL
Project approved & underway	Project approved but awaiting available resources	Project not yet approved and requires further input	Project to be removed by mutual agreement or failure to progress

Previous Status	Item	Progress to Date	Actions and Recommendations	New Status
	1	Apologies and Attendees		
		<p>Apologies: Cllr Philip Whitehead, Matt Perrott (Wiltshire Council); Cllr Chris Greenwood (Devizes TC & Rowde PC)</p> <p>Present: Cllr Dominic Muns (Chair), Cllr Kelvin Nash, Gareth Rogers, Andrew Jack (Wiltshire Council); Rebekah Jeffries (Rowde PC); Cllr Richard Oliver (Devizes TC); Cllr Terry James, Chris Stirland (Seend PC); Cllr Julia Ford (West Lavington PC); Cllr Fred Davis (Market Lavington PC); Cllr Chris Saunders (Easterton PC); Cllr Barry Devine (Worton PC); Steven Barnett (Marston PC); Rosalind Humphries (Bromham PC); Cllr Sue Ivey (Little Cheverell PC)</p>		
	2	Notes of last meeting		
		Notes from the Devizes CATG meeting on 28 th April were published at part of the agenda for Devizes Area Board’s meeting on 20 th June 2022: https://cms.wiltshire.gov.uk/ieListDocuments.aspx?CId=163&MId=14198&Ver=4		
	3	Financial Position		
		<p>Budget Available - £41,110.97</p> <p>The allocation for 2022/23 is £31,968 (subject to Cabinet Approval).</p> <p>Note: Order Values are subject to change</p>		
	4	Waiting & Parking Restrictions		
		Prior to the formation of LHFIGs, previously Parking & Waiting Restriction requests were processed centrally. Following Cabinet’s approval for the formation of the groups, these requests will be at the discretion of the groups to prioritise.	GR described how this role has now come into the remit of LHFIGs as part of the increase in duties and budget.	

			<p>The attached list details all the historic requests for the Devizes Community Area.</p> <p>The group must decide on whether to proceed with progression of these or to abandon.</p>	<p>This will allow requests to be dealt with more timely and allows more local discretion. This list are historic requests from Devizes TC. It is up to the group to decide to look at them now or for 2023/24. GR said how the greatest cost is in traffic order and advert costs. Doing all together will not have a big impact on the budget but doing all separately will be significant. DM was concerned about the budget and suggests this is left until next meeting. This will allow time for Devizes TC to meet with Cllr Mark McClelland. GR will look up historic costs for similar work around Devizes.</p>	
	5	Priority Schemes			
In Progress	a)	<p>Issue 6120 Lydeaway - Request for speed limit reduction</p> <p>(Priority No.01)</p>	<p><i>The speed limit or rather the lack of on the A 342 road between Lydeaway and Stert village entrance. When exiting the entrance of The Clock Inn Park the visibility is poor in both directions. Seeing that a lot of money has been spent on the work carried out in recent months on the renovation of the pathway between The Clock Inn Park and the entrance to Stert village which means more of the people from The clock Inn Park are using the pathway some of which have mobility scooters are finding it very difficult in crossing the road because of the speed of traffic which in some cases is in excess of the 60 miles per hour limit. In the last year there has been one accident of a car exiting The Clock Inn Park which in this case no one was hurt the police were not informed but both cars were written off. There are slow signs on the road and also illuminated 'slow down' signs before the 's' bends and the entrance to Stert village these do not seem to be effective.</i></p> <p>Stert PC have confirmed a contribution of £500 to the request.</p>	In progress as per update	In Progress

			<p>Atkins have completed the Speed Limit The assessment has concluded that a 50mph restriction can be considered. Indicative cost £6,000</p> <p>WH stated that the contribution which Stert PC agreed to make is £500 not £1,000 as listed within the budget. DM wanted to push through this project and was happy to accept this level of contribution from Stert PC. GR was happy to go ahead with this level.</p> <p>The Traffic Orders for the changes are currently being consulted upon. Closing date for comments was the 11th April 2022. Objection had been received and Cabinet Report submitted. This has now been approved. Works order is being prepared for issue.</p>		
In Progress	b)	<p>Issue 6-19-02 (Previously known as Issue 6569)</p> <p>Footway at Tanis, Conscience Lane, Rowde (Priority No.02)</p>	<p>RJ asked about the Issue (6569) recorded to create a new footway from houses at Tanis on Conscience Lane to the A342. The parish council supports this request.</p> <p>An initial ballpark estimates of £6,000 provided to enable development of scheme. Awaiting RPC to confirm acceptance of need to contribute 25% of the development costs, ahead of 2020/21 Substantive CATG Bid.</p> <p>Rowde PC now confirm their 25% contribution Initial discussion with BT for Service diversion has indicated costs of circa £30,000. Alternative solution being discussed with WC Estates to dedicate some of adjacent field and relocate hedgerow ongoing.</p> <p>Substantive bid unsuccessful in 21/22. CATG agreed to retain as a priority ahead of 22/23 Applications.</p> <p>RJ described how the PC now think they can put in a different type of footway, which will use a bridge. This work will be eligible under the new LHFIFG.</p>	<p>RJ said they now have permission from landowner about taking path a different route. These discussions are ongoing.</p>	In Progress
In Progress	c)	<p>Issue 6675 A342 Bromham (Priority No.03)</p>	<p><i>Bromham Parish Council would like to put in motion a speed restriction on the A342 from South of the Calne A3102 50/40mph speed restriction to the St Edith's Marsh 30 MPH restriction. This length of the A342 is now a 60MPH road with frequent occurring accidents which can be backed up by local police and a freedom of information request for the crash map information for accidents. This stretch of road starting at the Calne junction has the following: Farm shop, Residential properties, Chittoe junction - poor</i></p>	<p>DM recapped that the recommendation is to treat the whole road as per the report including Sandy Lane, not just the section within Bromham parish.</p>	In Progress

		<p>visibility. The Audi Garage, Residential properties, The A3102 Melksham junction with Collins Veg. Shop - minor accidents happen here on a regular basis not always police recorded- V P Collins Vegetables at 81 Devizes Road can support this. ACCIDENT SPOT; Double bends. ACCIDENT SPOT; New Farm and Digester entrance to A J Butlers Farm - between the double bends. Cross road junction to Highfield village centre and Roughmoor. Roughmoor 9 residential properties plus A J Butlers main Farm access and Open Reach telecom building. ACCIDENT SPOT; Cross road junction to Yard lane and The Pound village centre. ACCIDENT SPOT; Hawkstreet junction. A speed restriction has been requested on two previous occasions but without response. Bromham Parish Council ask that this request is seriously considered by that appropriate team.</p> <p>Speed Limit Assessment discussed at Nov 19 Meeting. Bromham PC to consider and advise if the wish to proceed with requesting a speed limit assessment. GR sent further information to PC 17.12.19. Awaiting BPC response on whether to proceed & contribution.</p> <p>The level of contribution from the parish council had previously been a sticking point. DM was happy to go ahead with a 25% contribution, as offered by Bromham PC. GR was happy to go forward with this.</p> <p>GR confirmed the speed limit review is underway and results will be available later. Once those are back and the assessment carried out, decisions on progressing any recommendations will need to be made.</p> <p>Speed Limit review has been completed. Information has been sent to the Parish Council (04/04). Review has made some recommendation for changes. To be discussed.</p> <p>BPC have responded and outlined they are not prepared to fund all of the recommendations made by the review. These are to implement 40mph south of Sandy Lane then 50mph to St Edith's Marsh. GR pointed out the need for clear start/stop locations for these changes not just based on parish boundaries. He confirmed these recommendations crossed into another parish within Chippenham CA but did not recommend leaving out this section from any changes.</p> <p>DM agreed further negotiations with the PC are needed.</p>	RH will speak with neighbouring parish about contribution towards work.		
In Progress	d)	06-20-21	<i>Access through this residential area is often used as a rat run, as it bypasses traffic</i>	Work is ongoing. Next task to	In Progress

		<p>Devizes TC</p> <p>Request for 20mph Limit – Area 3</p> <p>(Priority No.04)</p> <p><i>congestion in New Park Street leading to rat run mentality. Commercial Road from the junction at the Sainsbury Mini Roundabout to Rotherstone, the whole of Couch Lane, the whole of New Park Road and the whole of Victoria Road all have high concentrations of pedestrian and frequent parking manoeuvres, therefore a 20mph speed limit would be more appropriate for this area. We would call this Zone Three, 20mph speed limit. See attached plan</i></p> <p>KN spoke about how Devizes TC had looked at assessing the whole town centre for 20mph and wanted to know that CATG was happy with this and GR is in the conversation.</p> <p>RG asked about a contribution. GR has spoken to Simon Fisher about this and recommended splitting the request into 4, hence the several requests here.</p> <p>RG asked if CATG is happy to put 75% of costs to the assessment for the entire area. KN is happy with this.</p> <p>KN confirmed the funding from the town council has been agreed.</p> <p>Draft report has been provided by consultants, and will be issued ASAP. All locations will be eligible for 20mph. Delivery of 4 areas separately could cost £36,000 but combining all 4 at once could save £10,000. GR recommended actioning all 4 at once. KN wanted all 4 areas to be implemented and sensible to go with an economy of scale. DTC confirmed contribution of up to £12,000, circa 50% of the costs.</p> <p>PW thought it more sensible to do at once and make the saving. He agreed this was a large cost but it will have high impact on a large population and so was proportionate.</p> <p>GR has enquired whether the AQSG can contribute.</p> <p>DM wanted to push this forward and welcomed KN's offer and proposed to work on all 4 areas together.</p>	<p>draft TROs.</p> <p>Contribution from Devizes TC has been confirmed. Now needs to go to Devizes Area Board to be ratified. GR can continue work before this date.</p>	
In Progress	e)	<p>06-20-17</p> <p>Bromham</p> <p>Request for Pedestrians in road Warning Sign</p> <p><i>A request for new signs at the Pound and Horsepool to make drivers aware that there is no footpath/pedestrians in road?</i></p> <p>RH was not aware of the agreement to fund 100% but is happy to fund 25%.</p> <p>PW felt many parts of Wiltshire do not have pavements so new signage adds to street clutter. He wanted to be re-assured the parish council is behind this request.</p> <p>DM was happy to go ahead and fund if this is what Bromham PC want. RH confirmed it is. GR said how engineers are recommended to keep signage to a minimum and how it</p>	<p>GR has been told this work will be completed very soon and asks RH to let him know once the signage is in place.</p> <p>* Following the meeting, RH confirms the signage is there</p>	In Progress (work should be complete within 14 days)

		(Priority No. 05)	<p>increases liability on Wiltshire Highways.</p> <p>Works have been ordered with contractor. Installation imminent (if not already completed – setting out has been undertaken).</p>		
In Progress	f)	<p>09-20-10</p> <p>A361 Seend High Street.</p> <p>Concern for Pedestrian Visibility</p> <p><i>(Transfer from Melksham CATG)</i></p> <p>(Priority No. 06)</p>	<p><i>There are two dropped kerbs either side of the A361 where the pavement ends each side between Spout Lane and Inmarsh Lane. It is difficult to cross this stretch of road as it is on a bend meaning that walkers cannot easily see cars coming when crossing from the south to the north side.</i></p> <p><i>There are already dropped kerbs along this stretch of road. A high friction surface similar to the one installed at the Church Crossing would be useful to make drivers more aware that it is a crossing point. It won't improve visibility for the walkers, but may make drivers slow down a bit.</i></p> <p>The Following has previously been provided to Issue at Melksham CATG by Highways Officer:</p> <p>Officers have conducted a site visit and consider this to be more of an issue for outbound drivers as they approach from the s-bend near Spout Lane. The crossing point is more visible to drivers heading in the opposite direction.</p> <p>TJ wanted to see high friction surface and signage here and referenced Mark Stansby's comments when previously with Melksham CATG.</p> <p>DM reviewed the previous agreements over the contributions from Seend PC. TJ confirmed they are happy to contribute 25% to both the new signage and high friction surface. The parish council has agreed to contribute.</p> <p>Works order has been issued. Awaiting implementation date.</p>	In progress as per update. GR has been given provisional date of 1 st week in September	In Progress
In Progress	g)	<p>06-21-09</p> <p>Bishop Cannings</p> <p>Horton Road</p>	<p><i>The current speed limit between the Cannings Hill roundabout and a point just beyond Marlborough Close, is 50mph. Given the built-up nature of the road at this point, the parish council believes that the road should be restricted to 30mph.</i></p> <p><i>The 50-mph restriction in question is approximately 737 metres in length. Along this there are 24 streetlamps more or less evenly spaced, so there is an average of approximately 31 metres between them. s.82 Road Traffic Regulation Act 1984 defines</i></p>	In progress as per update	In Progress

	<p>Speed Limit</p> <p><i>1st Meeting Date</i> 09/11/21</p> <p>(Priority No. 07)</p>	<p><i>a restricted road as one where "there is provided on it a system of street lighting furnished by means of lamps placed not more than 200 metres apart" and s.81 of the Act states "it shall not be lawful for a person to drive a motor vehicle on a restricted road at speeds exceeding 30-mph."</i></p> <p><i>The default position on this stretch of road would therefore be 30-mph, except that Highways have chosen to impose a higher limit.</i></p> <p><i>The Department of Transport guidance on setting local speed limits states that "the standard speed limit in urban areas is 30-mph" and that roads suitable for 40-mph are generally for urban areas where there is little development. 50-mph should only be used in exceptional circumstances - but this does include roads where there are segregated road junctions for the developed areas.</i></p> <p><i>Although the housing along this length of the Horton Road is accessed via segregated junctions and not directly from the C8, there are 76 houses at Ferozeshah Road, 175 houses at the Corn Croft Lane estate and there will be a total of 230 at Laywood. This generates a significant number of vehicle movements onto and off the Horton Road. Additionally, there is substantial pedestrian use of the Horton Road footway to access the bus stops and local shops.</i></p> <p><i>Currently the Corn Croft Lane estate has a 20mph limit and it is likely that the Leywood estate when adopted will also be restricted to 20mph. It is not considered desirable to have such a high differential speed limit between the principal feeder road and the subordinate housing estates.</i></p> <p><i>DM was happy to promote this scheme as a high priority. GR agreed and will be able to commission a consultant to look at this.</i></p> <p><i>Consultants have commissioned to undertake review now that we are into a new financial year. GR confirmed the speed limit review is programmed in. Results will be available within 4-5 months, so likely to be ready for the meeting after next (Oct 22).</i></p>		
	<p>06-20-22</p> <p>Devizes TC</p> <p>Request for</p>	<p><i>Long Street, St Johns Street, the Highstreet, Market Place and Station Road are access to the town centre but are often used as a rat run, as it is shorter route to get through the town than preferred arterial route of New Park Street, which in turn leads to a rat run mentality. All these roads have high concentrations of pedestrian and frequent parking manoeuvres, therefore a 20mph speed limit would be more appropriate for</i></p>	<p>Linked to Issues Ref (d)</p>	

		20mph Limit – Area 1	<i>this area. We would call this Zone One, 20mph speed limit. See attached plan</i>		
		06-20-23 Devizes TC Request for 20mph Limit – Area 2	<i>The whole of Bridewell Street, the whole of Hare and Hounds Street, the whole of Sheep Street, the whole of Sidmouth Street, the whole of Maryport Street and the whole of Monday Market Street are either within the main shopping area of the town or are the feeder road into this area and as such all have high concentrations of pedestrian and frequent parking manoeuvres and therefore a 20mph speed limit would be more appropriate for this area. We would call this Zone Two, 20mph speed limit. See attached plan</i>	Linked to Issues Ref (d)	
		06-20-24 Devizes TC Request for 20mph Limit – Area 4	<i>There has been a 20mph zone implemented for the Brickley Lane area for time, however Church Walk was missed off that scheme. It meets all the same criteria as Bickley Lane and is a feeder road into this wider scheme, therefore we believe it should have its speed limit reduced to 20mph. We would call this Zone Four, 20mph speed limit. See attached plan</i>	Linked to Issues Ref (d)	
In Progress	h)	06-21-08 Worton SID Posts/ Sockets <i>1st Meeting Date 27/07/21</i>	<i>There is a large volume of traffic exceeding the speed limit driving through Worton. This is confirmed by the Community Speed Watch figures. In just 11 hours monitoring during April – May, they reported 67 motorists to the police for driving 36 mph and over; a further 228 were found to be driving at less than 36 mph but still breaking the speed limit . During May – June in just 12 hours, 79 motorists were reported to the police for driving 36 mph and over; a further 306 were found to be breaking the speed limit.</i> <i>Worton Parish Council would like permission to install at least two Speed Indicator Devices at locations to be confirmed with CATG. Would CATG fund the installation of the necessary posts?</i> <i>GR referred to SID policy about frequently moving to new locations. CATG can put in sockets for moveable posts at approx. £500 per site. RS thought there were 4-5 sites in Worton and asked about what contribution is expected if the PC already buys the SID. DM felt this should be 25%. RS will confirm this funding with Worton PC.</i> <i>DP confirmed the PC has budgeted for this and getting the sockets installed. He asked who will do this and if it will happen with the current financial year.</i>	In progress. Site visit took place in June. Was useful and all details agreed. Still awaiting report back before making further progress. BD asked about use of Auto Speedwatch devices and if Wiltshire Police are accepting data from them. DM has confirmation that police will use this data – it can be uploaded to their website. There is still a discussion going on with Wiltshire Highways about whether Auto Speedwatch can be attached to existing SID posts or other street furniture.	In Progress

			DM said that the locations and contributions are all agreed and that he'd like this promoted up the list. GR was happy with that. RS confirmed the contribution. RS provided list of locations (01/03). Scheme to be allocated to an Engineer and will be progressed for 22/23 implementation and site meeting held with PC.		
Awaiting update (PC contribution)	i)	<p>06-21-12</p> <p>Bromham</p> <p>New Road</p> <p>Request for 30mph Repeater signs</p> <p><i>1st Meeting Date</i> 09/11/21</p>	<p><i>There is no 30MPH signage at the school end of New Road in Bromham. Some drivers get confused and mistake the road for a national speed limit.</i></p> <p><i>Several school children live along the road and walk to school unfortunately there is no pavement present, so they must walk on the road. One of the children that commute to school is also in a wheelchair and there have been multiple issues with cars travelling too fast.</i></p> <p><i>I am a Parish councillor and my daughter has been attending the school and nursery for 2 years. There have been three occasions where we have had to jump into the verge to avoid a speeding vehicle in this time. And I don't do the school run on a daily basis. I have had multiple complaints from the residence about the speed of vehicles along this stretch and it is a real safety concern. I feel that some 30 MPH repeater signs and possibly the addition of some school signage would be a step in the right direction for vehicles to follow the speed limit along New Road.</i></p> <p><i>I believe that the need for repeater signage is based on street lights being present along the road. While New Road does have a couple of street lights they are not along the entire stretch hence drivers getting confused. The street lights that are present are also not conventional ones and use telegraph poles which adds to the confusion.</i></p> <p>DM agreed that the situation for drivers is unclear in that this road appears to be leading away from the village yet is within 30mph limit. GR has looked at this road via Street view. The project would need to be promoted to High priority for him to spend time taking a closer look.</p> <p>RH confirmed this has support from the PC.</p> <p>Location has been reviewed and the signing / Street Lighting considered to be appropriate. It would be possible to provide some carriageway roundels in areas where signing exists to supplement the repeater signing. Estimated Cost £2,500.</p> <p>There has been no update from Bromham PC about a contribution towards this work (Meeting 26/04/22).</p>	RH gives confirmation of Bromham PC's contribution to the scheme. The project can progress	In Progress

In Progress	j)	<p>06-21-13</p> <p>Devizes</p> <p>Eastleigh</p> <p>Request for Bus Stop Clearway</p> <p><i>1st Meeting Date</i> 09/11/21</p>	<p><i>The bus stop outside of 49 Eastleigh Road is often blocked by parked cars, particularly at peak times when the chip shop is open. Buses must pull up in alternate locations which causes issues for people with reduced mobility as the door does not then align with the paved surface designed for wheelchair users. There are no road markings to discourage drivers from parking here. The matter is further exasperated given that the lamp standard supporting the bus stop signage has recently been replaced following a collision, and whilst the timetable notice has been replaced, the Bus Stop sign is missing therefore there is nothing at all to indicate to drivers that this is a bus stop. It has been an issue for some time; however, the Town Council is now being lobbied by wheelchair users who find accessing public transport at this location a significant challenge, thus adding additional difficulties to their mobility.</i></p> <p><i>The Town Council fully support this request as it believes it is incumbent on all local authorities to manage their facilities and services in a way that make them accessible to all sectors of our community. It would appear that there is a relatively simple solution to problem at the bus stop outside of 49 Eastleigh Road, which will help relieve the considerable problems wheelchair users are having in the Eastleigh Road area accessing public transport. Devizes Town Council is prepared to make a contribution to the cost of this highway improvement.</i></p> <p>KN described the situation at this bus stop. There is no longer anything to show to drivers this is a bus stop and to not park there. Parking makes it far harder for disabled passengers to use the bus.</p> <p>GR gave an approx. cost of £2,000 for marking the bay. He described that autumn / winter is not good weather for lining work and this will need to wait until Spring for any progress</p> <p>Consultation has now been undertaken. One response was received and the Town Council has resolved to pursue. Works order to be prepared.</p>	<p>KN confirms the consultation by Devizes TC has been carried out. There was only 1 objection and there are possible solutions to support that resident.</p> <p>GR does not have a date for work but it will be within next 3 months.</p>	In Progress
In Progress	k)	<p>06-21-02</p> <p>W Lavington, Duck Street</p> <p>Parking</p>	<p><i>There have been ongoing parking issues in Duck Street and in particular around Dauntsey's Care Home for a period of time but has become more challenging over the last 6 months. The current inconsiderate parking extends to the end of Duck Street where it meets the main road and therefore at times visibility at the junction is compromised.</i></p>	<p>GR said that it would be helpful to have a guide from the PC as to exactly where they would like the new lining to go. This could be in the form of a sketch map. JF said</p>	In Progress

		<p>Concerns.</p> <p><i>1st Meeting Date 27/07/21.</i></p>	<p><i>Relationships between the home and residents has broken down in terms of communication and the impact being that there is inappropriate parking occurring regularly. The parish council receives complaints from residents and also local farmers who are unable to pass through the road to get to their fields. During April a nurse who came to visit the home had her car damaged whilst it was parked in Duck Street.</i></p> <p><i>The police have been advised and they have said that they need to see the inconsiderate parking when it is actually happening. Photographs have been sent but again the police advise that they need to be there at the time.</i></p> <p><i>A resolution needs to be found for visitors in Duck Street and particularly those visiting Dauntsey's care home and this would be for urgent and short-term parking.</i></p> <p>The Highway is for passage and repassage of vehicle. Parking on the highway is only tolerated in those scenarios where it does not cause an obstruction. Where an obstruction is caused, or vehicles are ignoring the guidance in the Highway Code (do not park within 10m of a junction) then responsibility lies with the Police. Discussion with the local NPT is recommended if the issue is consistent (Daily)</p> <p>DM described how this creates an obstruction at Duck St, especially for emergency vehicles. He felt that double yellow lines here would help make enforcement easier. JF was happy with these discussions. She pointed out the situation had been getting worse and was of high concern in the village.</p> <p>GR pointed out that waiting restrictions are not normally for CATG to deal with but in these extreme circumstances CATG can take this on.</p> <p>DM described the situation at this parking bottleneck. He wanted to see some progress to be able to get a ballpark figure for cost. GR gave an estimate of approx. £5,000.</p> <p>JF reported the PC has consulted with residents and the care home. Only 1 is not supportive of yellow lines, but there are different views about the length – from just outside the care home to the entire length of Duck St. JF confirms the PC's contribution and is happy to work on deciding the length of lining. She asked if "primrose yellow" lines for conservation areas would be available and GR confirms.</p> <p>Scheme has been added to the 22/23 programme for progression.</p>	<p>she will arrange for that to be created and sent to GR.</p>	
In Progress	l)	6-22-02	<i>The streetlights in Roundway Park are decades old and mounted on quite low columns</i>	Progress is as per update. RO	In Progress

		<p>Devizes Roundway Park</p> <p>Request for Street Lighting</p> <p><i>1st Meeting Date</i> 01/02/2022</p>	<p><i>resulting in the light that is being emitted illuminating very small areas, leaving long tracts of the pavement completely in darkness.</i></p> <p><i>Many of the homes in the residential area of Roundway Park and Gardens are occupied by a significant number of older single people or older couples. Councillor Oliver has received requests from residents of 24 households seeking improvements to the level of street lighting in the area.</i></p> <p><i>Additional concern is that the pavement in the area is in relatively poor repair, and coupled with poor lighting, the chances of trips and fall is greatly increased. Increasingly, residents will not leave their houses during the hours of darkness as the fear coming home on foot from bus stops or walks may result in a fall.</i></p> <p><i>Wiltshire Council's Traffic Engineer and the Streetlighting team indicates a total cost in the region of £5k to install two higher posts with better lights.</i></p> <p>Councils consultants have been engaged to deliver. Initial consultation / confirmation with affected residents being undertaken by DTC (RO) / LM. Expected implementation Sept / Oct.</p>	<p>confirms the consultation carried out by Devizes TC has been positive and supportive.</p>	
In Progress	m)	<p>6-22-04</p> <p>Devizes Opendoors / Southbroom Centre</p> <p>Request for direction signs</p> <p><i>1st Meeting Date</i> 12/04/2022</p>	<p><i>Devizes Opendoors has moved to Southbroom Centre, Victoria Road and, despite clear information on their website and on leaflets, many visitors find the premises difficult to find. Staff from agencies coming from other towns as well as the homeless and vulnerable people we serve, have commented on how difficult it is to find us. Pedestrians need informing that access is not via Southbroom House driveway but via the path that leads from London Road to the end of Victoria. Drivers need reassuring that Southbroom Centre is at the far end of Victoria Road because many think there is nothing beyond the circle of grass surrounded by flats. Supported by Town Council.</i></p> <p>Response has been previously given outlining a solution is possible. Costs expected to be £2,000.</p> <p>DTC's contribution to the scheme was confirmed. GR was happy to accept this project.</p> <p>Scheme has been added to programme for 22/23 and will be progressed in due course.</p>	<p>GR confirmed this project is moving along. The draft design is done and the order for the new signage will be out soon.</p>	In Progress
	6.		Other priority schemes		

Approved – awaiting slot	a)	<p>09-21-01</p> <p>Townsend, Poulshot</p> <p>Request for new footway.</p>	<p><i>As an issue of safety it is requested that a pavement be built between the Church and Townsend farmhouse.</i></p> <p><i>After a request from several parishioners, the Parish Council discussed the idea of a new pavement because of the safety issue of pedestrians using the roadway between the Church and Townsend Farmhouse. There has been a site meeting with Andy Cadwallader resulting in a preliminary costing of £19,000. The Parish Council has also has looked at the costing and other ideas.</i></p> <p>The following has previously been provided to Issue at Melksham CATG by Highways Officer:</p> <p>Construction length is approximately 75m. New Footway with kerbing costs approximately £265 per metre and therefore a ballpark estimate is £20K. This does not allow for temporary traffic management and establishment of site welfare facilities. A road closure might also be required.</p> <p>GR quoted a figure of £265 per metre for 75m of footway. RC had not had feedback during the change from Melksham to Devizes CATG.</p> <p>DM asked if Poulshot PC could contribute the 25% of the £20,000 total cost. RC would need to check and ask the parish council for thoughts on how to move forward.</p> <p>RC confirmed that Poulshot PC will make the 25% contribution of the £20,000 cost. He wanted RD to visit the site to look at any costs savings such as materials or length of footway. GR pointed out that materials would not change as they are standard for highways works.</p> <p>There was detailed discussion about the length of new footway needed, where it needed to cover and if it could be reduced from 75m.</p> <p>Funding the project was discussed (the 75% of CATG funding is equivalent of a year's budget). DM suggested contributions from local development could support this, but RC didn't think there would be anything suitable. GR mentioned the Substantive Fund and bid process for larger projects. Work is needed to go into a bid to make it good quality and give it a higher chance of success. This usually includes £3-4,000 of CATG funding to reduce what's needed from Substantive funds.</p> <p>DM suggested taking this offline to develop a conversation and for GR to assess this in more detail and rate its chance of success.</p>	<p>GR confirmed there had been no further work done. He explained how funds need to be committed to this project as part of the substantive bid. Also that design work needs to be well progressed and costings firmly established and accurate. There is an expectation that approx. ⅓ of the cost of the overall bid comes locally. 25% of this is still expected to come from the PC.</p> <p>No one from the PC was present to confirm this. DM will contact the PC.</p> <p>This is moved to in progress.</p>	In Progress
-----------------------------------	----	--	---	--	----------------

			<p>DM described the level of cost this project is likely to reach. Being beyond CATG and the parish's resources, this is going to need funds from the Substantive Scheme. GR said this can go towards bids in 2022.</p> <p>GR said he had nothing further to update – he had not been pushed by the PC to move this forward. TR said how the PC is keen for this to happen but is aware of the need for a place within the prioritisation. DM agreed this could remain on the agenda for another meeting to allow the parish to come back.</p>		
Awaiting update (survey)	b)	<p>6-21-16</p> <p>High Street, Wedhampton</p> <p>Change to road layout</p> <p>1st Meeting Date 01/02/2022</p>	<p><i>Very poor visibility when exiting the High Street, Wedhampton from the south east junction with the A342, has resulted in a number of accidents both recently and over the longer term. Traffic travels along the A342 at high speeds, and the bend just north west of the junction obscures any view of oncoming traffic, which makes it an exceptionally dangerous junction, and it is only a matter of time before there is a fatality.</i></p> <p><i>I walk from Urchfont across to Wedhampton regularly, and have witnessed the aftermath of two accidents in the last two months.</i></p> <p><i>It has been suggested by Wiltshire Councillor Philip Whitehead, that the aforementioned junction should be entrance only into Wedhampton. This can be achieved with One Way signs at the entrance, and corresponding No Entry signs a short way before the current exit from the High Street.</i></p> <p><i>It should be noted that the north west entrance at Greengate Road has far better visibility, and having spoken to some Wedhampton residents, including an Urchfont Parish Councillor who lives in Wedhampton, the village would be much in favour of such a change.</i></p> <p>DM asked if the PC had consulted with residents about the proposed changes. PW said they were doing it but was not aware of the result. He will check about this.</p> <p>* Following the meeting PW confirmed Urchfont PC has consulted with residents and they are in favour of making this change.</p>	<p>The consultation has been carried out with residents and is in favour of the project. GR said how the budget would mostly be towards the traffic order and signage changes and would be £6-8,000. DM will contact the PC / Philip Whitehead for confirm the contribution.</p> <p>This moves to in progress</p>	In Progress
Approved – awaiting slot	c)	<p>6-22-03</p> <p>Devizes</p>	<p><i>Increased traffic from the football academy and Inadequate Road signage on this junction is causing numerous near misses with cars driving straight out of the Green Lane academy and ignoring junction markings on the road.</i></p>	<p>RO confirmed Devizes TC's contribution towards this. GR gave estimate of costs - £4-</p>	In Progress

**Byron Lane /
Green Lane**

**Request for
Give Way
Signs**

*1st Meeting
Date
01/02/2022*

Give way signs need to be installed to reinforce the junction markings on the road

Site has been looked at by an Engineer and comments as follows;

I can see why some are confused by this arrangement. I would suggest we provide markings as per the sketch below:



KN confirmed DTC has been discussing this project and will contribute towards it. He asked about changing the priority so that Green Lane traffic goes straight ahead. There was discussion about this versus access for Byron Way. GR advised making Green Lane right of way may bring about issues with speeding.

There was discussion about new signage at the junction and refreshing the current worn markings. GR confirmed both can be done by LHFIG. GR recommended installing both together with give way coming from Green Lane and the group agreed.

AJ was asked to liaise with Wiltshire FA about messages to users of the site taking greater care when leaving and using this junction.

5,000
This moves to in progress

7.

Outstanding / Open issues

	a)	Issue 6881 A342 Lydeaway, Planks Farm Speed Limit reduction request.	<i>As a safety measure to prevent death or serious injury we would like the current 50 mph reduced to 40mph as we believe that a contributory factor to the serious accidents which have already occurred is the speed. A cost-effective solution of reducing the speed limit by 10 mph will not stop those that speed regularly but even regular speeders are reticent to go very far above set limits. We suggest that the area of the A342 be from Lydeaway past Wedhampton to Chirton. This section of road has very tight bends and highly used junctions. This small measure we believe will lessen the chance of a fatality along this section of the A342.</i>	This is linked to issue 6120 as discussed above. GR wanted this issue left separately on the list.	
Awaiting update (data)	b)	06-21-11 Rowde A342 SID Infrastructure 1st Meeting Date 09/11/21	<i>The Parish Council would like to purchase a Speed Indicator Device (S.I.D) for use on the A342. The Parish Council is looking for assistance from CATG with the infrastructure to support a Speed Indicator Device: posts and sockets.</i> RJ confirmed there had not been Metrocounts done but that data would be available from their Community Speedwatch group. She asked if a Metrocount would be needed. GR confirmed that the CSW group would have been set up following a Metrocount but if there were other locations in mind for the SID that did not have any data, then a Metrocount would be needed. DM asked if a new Metrocount is needed here? RJ replied that the Community Speedwatch (CSW) group has data for 3 locations but that a 4 th location has had a new Metrocount requested. The PC is awaiting the data from that check.	The required Metrocount data is in. RJ confirmed the PC's contribution. GR gave estimate of £500 per location or £2,000 overall. This would include a socket for each location and 1 pole that would move between locations.	Approved – awaiting slot
In Progress	c)	6-21-15 Marston Request for Speed Limit Review 1st Meeting Date 01/02/2022	<i>Issue 1 The speed limit through the village is designated 40mph – 30mph 40mph and the national speed limit. Vehicles travel through the village at higher speed limits on a regular basis and residents are finding it unsafe to come out of their drives onto the highway, especially in the higher speed limit sections.</i> <i>All the residents exiting their properties along the main road through the village are extremely worried about the speed of vehicles along this road a number have commented, at the meeting and through email, `That there is an accident waiting to happen`. Although, there is a danger exiting properties throughout the day it is exacerbated at high use times during the work and school runs in the morning and evening.</i> <i>Issue 2.</i>	SB discussed the changes in speed limit, within 1 mile, along the length of the village. GR stated the minimum length of a speed limit is 300m whilst Highways try to keep it to 600m, so the changes within Marston are within regulations. He pointed out that the speed limit review is possible but in his view, it would not give a recommendation for change. It is not unusual in rural parts	Awaiting update (confirmation of 100% funding)


			<p><i>On Long Street a single-track road, with no passing places, the speed limit is 60mph. The Erlestoke end of Long Street has now been made up with road planings and cars regularly travel down the single-track road at speed, proving a hazard to other vehicles and Walkers on the common land, which is situated on either side of this single-track road.</i></p> <p><i>We request an investigation by the highways department in order to find a solution to ensure the safety of all road users in our village.</i></p> <p><i>We would hope that such an investigation would lead to a uniform reduction in the speed limit throughout the village from Norney Bridge to the end of the inhabited village on the Coulston Road, rather than 4 different limits within 1 mile. (30 - 40 – 30 - 60mph)</i></p> <p><i>A reduction to 30 miles per hour on Long Street to 30 MPH.</i></p> <p>GR said he had looked at this area and does not think a change in the speed limit will change drivers' behaviour. Long St is a straight single-track road and GR felt drivers will go at the speed they think suitable. He does not think LHFIG should progress this request. There was no one from Marston PC on the call but TR said this is important to the PC and how they wanted help from GR to find a solution.</p> <p>PW described how Lockeridge near Marlborough had used a number of different tactics, like planters on the roadside or bicycles left outside houses to encourage drivers to slow down. AJ had been involved in this work, with a consultant, Ben Hamilton-Baillie. AJ can circulate the design reports of various villages from Marlborough area.</p> <p>DM described how he wants to create a document containing options that Highways are able to help with for different situations, along with cost estimates. GR pointed out there is already a page on the website giving this.</p>	<p>of Wiltshire for properties on the edge of settlements to be within a 60mh limit.</p> <p>SB was happy to contribute 25% towards the cost of a speed limit review. However, DM said that given the chances of a recommended change, he did not feel it was a good investment of LHFIG's funding. SB offered to pay 100% if this was possible and DW was happy with that approach. He offered that if the review did come back with a recommendation, then the PC's contribution would be reduced to 25%.</p> <p>DM then tried to find out whether the problem was actually about speeding within the existing limits, rather than a desire for lower limits. If there is speeding, then there are enforcement options that can be put in place.</p> <p>SB will source the 100% funding for the speed limit review and confirm</p>	
Awaiting update (internal work)	d)	<p>6-22-06</p> <p>Bromham A342 Chittoe</p> <p>Request for junction improvement</p>	<p><i>Could I also ask that some reflective markers are placed by the Council at the end of the road as you leave Chittoe for the main Chippenham Devizes Road. There always used to be markers which are critical to any traffic wishing to turn right off the road into Chittoe. With headlight coming towards you there is no way you can see this junction and the signage on the left opposite the entrance to the road is severely hampered by being in the hedge. It is purely for safety, coming from Devizes and turning left is so much easier, you can see the junction in advance. I would be so grateful on behalf of everyone who lives here just to make this a safer entrance of the main road.</i></p>	<p>GR confirmed this can be removed as this is internal Highways work.</p>	To be removed

		<p>signing</p> <p><i>1st Meeting Date</i> 12/04/2022</p>	<p><i>We have asked before for NO overtaking signs along the stretch on the main road between, the Calne turning and the Melksham turning, people drive so fast and regularly overtake at speed on this stretch, if you are leaving Chittoe and wishing to turn left it has been a very dangerous manoeuvre.</i></p> <p><i>Parish Council Comment: Additional signage for the Chittoe turning off the A342 has been previously requested by the PC, but it was felt that there was adequate signage, but this junction is difficult to see when travelling at 60MPH with overgrown verges, vegetation and hedges on both sides of the turning.</i></p> <p>GR pointed out the speed limit review had already picked up this junction and it is being worked on internally by Highways' own collision team to look at safety solutions. These will be implemented from a central budget and not this group's.</p> <p>LM asked for timescales and GR said this would be actioned within the current financial year. DM asked for this to be kept on the list but in red.</p>		
Awaiting update (site visit)	e)	<p>6-22-07</p> <p>Seend A361</p> <p>Request speed limit reduction</p> <p><i>1st Meeting Date</i> 12/04/2022</p>	<p><i>Speeding traffic both east and westbound, coupled with safety issues as drivers slow to turn into Seend Cleeve junction and the risk of being rear ended by vehicles behind not slowing down enough. There is also a safety issue for pedestrians crossing to get to the bus stop on the other side of the road. There is a school bus pick up and drop off each day, with children needing to cross this busy road. A metro count was taken in November 2021, the results of which have shown that there is a proven issue of speeding both east and west bound. A copy is attached to this application. There is short section of the road, after you leave Seend High Street and past the Bell crossroads, where it increases from 30mph to 60mph for a couple hundred metres before it reduces to 50mph close to the Seend Cleeve junction and continues at 50mph through the Baldham Bends to just past Littleton (before the Semington roundabout). We believe the reduction to 50mph was introduced by a TRO in 2013. The 30mph was extended further down the A361 by a TRO in Nov 2018 as part of road safety improvements at the Bell crossroads. So it goes from 30 to 60 to 50mph in a fairly short length of road.</i></p> <p><i>We would like a speed reduction from 50mph to 30mph to extend past the Baldham bends, which is already a re-known accident black spot. We believe that drivers are more likely to slow down earlier if there is a more significant drop in speed limit from 60mph to 30mph. We would also like to see double white lines, which would restrict overtaking whilst a car is turning into the Seend Cleeve junction.</i></p> <p>The length of A361 between Seend & The Stocks is approximately 900m. Idealised</p>	<p>GR has already had discussions with Seend PC and a site visit is planned for w/c 14th July.</p> <p>Work is on hold until site visit.</p>	Awaiting update (site visit)

		<p>minimum length for speed restriction is 600m Road was reviewed in 2010, and no significant change to environment since. Road is of High Quality, straight and good width, with occasional access. Any review of speed limit is unlikely to recommend alteration.</p> <p>TJ agreed this stretch of road is contentious and felt the A361 is no longer fit for purpose here. He described the issues as when cars wish to turn off the A361 to Seend Cleeve or The Stocks but are overtaken by speeding cars. There are also issues with Baldham Bridge and vehicle strikes. TR mentioned a Metrocount from November '21 that showed a speed issue and how the village and the roads through it need looking at. DM asked GR if it's possible for a wider look at the situation to see what could be done? DM felt that often, PCs know there is a problem but don't know how to tackle it. GR felt the road will not get a 30mph limit due to the lack of house frontage onto it and also that reducing speed limits don't necessarily solve problems when drivers will travel at the speed they feel fits the road conditions. GR thought it best to look at the exact problems and try to solve those. DM asked if GR, TR and the PC can hold a site visit.</p>		
Approved - awaiting slot	f)	<p>6-22-08</p> <p>Seend A361 / Bollands Hill</p> <p>Request for small signing alterations</p> <p><i>1st Meeting Date 12/04/2022</i></p> <p><i>Despite the road safety improvements carried out in 2018 at the Bell Crossroads under the 'Local Road Safety Scheme' by Wiltshire Highways and the additional signage put in place in Bell Hill in Autumn of 2020, the Parish Council is still concerned with the high number of accidents occurring at the Bell crossroads, as some drivers are not stopping at the top of Bollands Hill and Bell Hill.</i></p> <p><i>We would like to ask for the support of CATG to look at what else can be done at these crossroads to improve driver awareness of the need to give way at these junctions. Following a useful meeting with Highways, it was suggested that some small scale measures may be possible to improve signage and visibility making drivers more aware of the cross roads and the need to give way. Whilst, we have been told, the cross-roads do not meet the DfT criteria for a Stop sign, we would ask if there is any discretion on this, as many people feel a stop sign and continuous white line would help reduce the number of accidents.</i></p> <p>Several suggestions have been put forward in a meeting with the PC and can be considered, However the use of Stop Signs or the associated Road Marking are not an option available.</p>	Work is on hold until site visit. This can take place at same time as 6-22-07	Awaiting update (site visit)

			Site Meeting planned for July.		
Awaiting update (Data required)	g)	6-22-09 Seend C20 Request for Horse Warning Signs <i>1st Meeting Date</i> <i>12/04/2022</i>	<i>Horse-riders regularly travel from Seend and Seend Cleeve, along the C20 towards the A365 Redstocks junction to cross to reach the bridleways on the other side. It is quite a fast road for riders to cross safely. The speed limit along this stretch is 60mph. With an increase in horse stables and equestrian activities in Seend and Seend Cleeve, there has been an increase in the number of horse riders on the parish roads. We would like to see the installation of the triangular horse crossing warning signs in each direction on the A365. But, in the first instance, to find out the likely cost and feasibility of installing such signs.</i> GR said these are legitimate signs and can be used here but he would like to know more about numbers of horses and how often they cross the road here. DM asked TJ and Seend PC to collate this data.	TJ confirmed this can be removed	To be removed
Awaiting update (confirmation of Auto Speed watch)		6-22-12 M Lavington Request assistance with Auto Speed Watch <i>1st Meeting Date</i> <i>12/04/2022</i>	<i>We have had an on-going problem with speeding on this stretch of road, and just over a year ago installed a Speed Indicator Device, to try and act as a deterrent for speeding drivers. Whilst the SID has been of some success helping to slow drivers down, the device is recording numerous speeds well in excess of the 30mph speed limit i.e., during the week commencing 6/3/22 there were 13 readings of over 60mph, including two readings of 83mph. Whilst this information is helpful in determining when might be the best times of day for the Community Speedwatch Volunteers, and Police Enforcement Officer to carry out enforcement sessions, it is not providing details of the vehicles which are driving at such dangerously high speeds.</i> <i>To try and help identify the vehicles which are driving at such high speeds, the Parish Council have made the decision to purchase an AutoSpeedWatch roadside camera device, which takes photographs of the rear number plates of any passing speeding vehicles. These details can then be passed on to the Police. Could we please request support from the CATG / LHFIFG committee to install a permanent post on Spin Hill, on which the AutoSpeedWatch device could be attached. The Parish Council recognises that it may be required to contribute towards the cost.</i> Discussions around Auto Speed Watch remain ongoing at Cabinet Member level – Issue on hold till further clarity is provided.	FD asked about use of Auto Speedwatch here. DM had already covered this and stated Wiltshire Council Highways are still making a decision. FD was disappointed but DM confirmed his support but said how this needs to go through the proper channels	Awaiting update (confirmation of Auto Speed watch)
Awaiting update (PC)		6-22-14	Residents have long complained about speeding through the village, and they request that the current speed limit is reduced from 30mph to 20mph. A recent Metro Count	No one from Urchfont PC present.	Awaiting update (PC)

contribution)	contribution)	<p>Wedhampton</p> <p>Request for 20mph Limit</p> <p><i>1st Meeting Date</i> 12/04/2022</p>	<p>showed that 1.1% exceeded the speed limit on average. The average speed was 17.3mph and the 85th Percentile was 22.8mph.</p> <p>This issue was discussed at the Urchfont Parish Council meeting on 13th December 2021.</p> <p>There was no one from Urchfont PC present to confirm a contribution</p>		
8.	New Issues				
a)	6-22-16	<p>Devizes Southbroom Road</p> <p>Request for Residents Parking</p> <p><i>1st Meeting Date</i> 05/07/2022</p>	<p><i>The residents of Southbroom Road between numbers 73 and 87, have written to Devizes Town Council, requesting that the Council consider supporting their ambition for a resident only parking zone to the front of their properties. The map below shows the proposed extent of the residential parking zone.</i></p> <p><i>There are a number of properties within Southbroom Road which have not been included within the request, such as 2 through to 20 to the southwest of the fire station, numbers 33 to 52 opposite the fire station and numbers 89 to 113 near the roundabout with Nursteed Road. It is not clear if there is an intention from those to making the request to include these additional properties.</i></p> <p><i>In their communication, the residents are increasingly concerned that there has been a rise in the number of private cars, business vehicles and town commuters now using the limited amount of parking space available to residents during the normal working day, and which stretches throughout the evening, overnight and over the weekend.</i></p> <p><i>They believe having residents-only parking will assist the affected residents to carry out any normal daily or weekly tasks that require their vehicles, without the concern that on their return, no space would be available and must therefore find alternative parking which can be some distance away from their property.</i></p> <p><i>In their request, the residents also believe that if the areas set out in figures 2 & 3 were unrestricted for parking during the day, this would be of assistance to all residents. Should the committee wish to support the request, a round of more formal consultation would need to be undertaken to assess if over 50% of the residents support the proposal. As part of that consultation, often the consultation area needs to stretch beyond the immediate request area as any changes in parking may impact on a wider community.</i></p> <p><i>Devizes Town Council supports the broad principle of a residential parking zone in Southbroom Road; and that this request should be submitted to Wiltshire Council asking if this would be suitable for a residential parking scheme and if it is, what would be an appropriate consultation area for seeking residents views who would be affected,</i></p>	<p>This is a request for a new residents' parking scheme in the Southbroom Rd, Estcourt Cres. area. RO and KN discussed the situation and area.</p> <p>The first stage of establishing residents' parking schemes is for the TC to consult with residents. KN and RO agreed to take that back to Devizes TC</p>	Awaiting update (consultation)

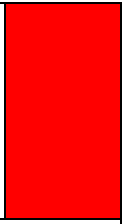
			<p>including those living beyond Southbroom Road.</p> 		
	<p>b)</p>	<p>6-22-17</p> <p>Devizes Bath Road</p> <p>Request for Pedestrian Crossing Improvements</p> <p>1st Meeting Date 05/07/2022</p>	<p>Currently there is no wheelchair access from the Avon Road side of Bath Road onto the canal. It is impossible for wheelchairs and extremely difficult for bicycles and push chairs to get down onto the relative safety of the canal tow-path to get in to town. Bath Road is a very busy and fast road and the small island crossing close to the Avon Road entrance and near the Prison Bridge end is too narrow to safely cross to the middle with a bicycle or pushchair and stay out of the flow of traffic. There is also no cycle path along Bath Road and the pavements are too narrow. There is a ramp that leads under Prison Bridge on the other side of the Bath Road island crossing but there is then no access back to the shop from the canal (unless they use the steep slope outside the Caen Hill café) or stay on this side of Bath Road where there are drop kerbs but then no access across Bath Road further down (there are only steep kerbs on the canal side of Bath Road so there is no easy access the whole way along to and from the shop / petrol station) – wheelchair users are forced to cross the dangerous and fast Bath Road! My two young boys would like to be able to cycle to school but can't physically lift their</p>	<p>This request is about replacing an existing traffic island with a zebra crossing to make it easier for pedestrians to cross. This does have the TC's backing. KN mentioned issues about pedestrians or cyclists using Webbs Lane. DM felt this didn't have the proper scrutiny of Devizes TC. He asked GR for a realistic solution. There is a need to look at demand for crossing at</p>	<p>Awaiting update (Investigate demand)</p>

		<p><i>bikes down the steep steps that exist at the entrance to Webb's Lane and the bikes are vulnerable at the island as they remain partly in the carriageway when waiting in the middle. I have discussed the issue with Mr Grist (owner of Webb's Lane) and the Canal & River Trust but neither can do anything about a slope from the steps without compromise or agreement with each other – which is proving too difficult. I propose a Zebra Crossing with Belisha Beacons be installed instead of the island so a safe crossing across the whole road can be achieved (removal of the island would be necessary). There should absolutely NOT be a push-button type crossing as this will impact on residents (noise and traffic pollution) but a voluntary stop of traffic only. I also believe this would be beneficial at the other end of Bath Road where the island is near Caen Hill Gardens and the Mayenne Road areas.</i></p> <p><i>This would provide safe crossing at both ends of Bath Road / Avon Road for all users to cross to the canal and shop and undoubtably slow the traffic down coming from the town and up the dual carriageway, which they do at great speed. There have already been fatal accidents at the bridge and it is just a matter of time before there is one where the cars come speeding up the dual carriage way into town!! New road layout signs would need to be installed at either approach to indicate to traffic they need to slow down and finally enable us to cross this awful road safely!</i></p> <p><i>I know there has been consultation about a pedestrian crossing directly to the Spar shop but this was not a practical solution due to the cars / parking and side roads. Therefore, I hope that two Zebra crossings at either end of that stretch, where the islands already exist, will be a better compromise. I have the full backing of Cllr Chris Gay and many residents, especially parents of young children! The Canal & River Trust have said they are planning to improve the slope in front of Caen Hill Café for disability access and will improve the access down to the canal from the Spar Shop (Westminster Close) also – along with gravelling the path way – this will then be a safe / easy route all the way from the top of the dual carriage way / Caen Hill into town! We just need a way of crossing Bath Road in order to access it!!</i></p>	<p>that point, then to look at the type of crossing most suitable for there.</p> <p>KN will go back to Devizes TC for further work looking at crossing demand there.</p>	
	<p>c) 6-22-18</p> <p>Seend Bollands Hill</p> <p>HGV Use</p> <p>1st Meeting</p>	<p><i>The road is increasingly used by large vehicles (Lorry's / Coaches) resulting in confrontation when such vehicles converge on the narrow bends adjacent to this junction. This has led to some altercations and damage to private land</i></p> <p><i>Previously WCC Highways (October 2018) provided a written reply explaining why they would not consider diverting large vehicles away from this road (see attached correspondence). One of the reasons given was there had been no recorded damage to private property. As this is no longer the case, Seend Parish council would like to request</i></p>	<p>Since the 2018 report stating no damage to property, TJ stated there has been further damage and increased use by HGVs and larger vehicles. DM suggested this is built into the site visit at Seend. This can take place at same time as</p>	<p>Awaiting update (site visit)</p>

		Date 05/07/2022	<i>CATG review the current situation whilst also taking a holistic approach to ongoing issues at the Bell Crossroads at the end of Bolland's Hill to reduce the traffic volume attempting to join/cross the A361 at this junction.</i>	6-22-07	
	d)	6-22-19 Urchfont The Croft Dropped Kerb 1st Meeting Date 05/07/2022	<i>The Croft has a population of largely elderly residents who have difficulty taking wheelbarrows to the Allotments because of their having to mount a kerb. Access is likewise especially hard for those with mobility scooters and others with prams or buggies.</i> <i>We request that a 'drop kerb' is put in place opposite to the path leading in to the allotments.</i>	GR gave estimate of £1,500. No one from Urchfont PC was present to confirm contribution.	Awaiting update (PC contribution)
	e)	6-22-20 Devizes The Market Place Bollard Replacement 1st Meeting Date 05/07/2022	<i>The original "Keep Left" signage directing traffic around the central pedestrian refuge outside the Corn Exchange was damaged and removed over recent years, with temporary signs now being used. These temporary signs are out of keeping with the aesthetics of the town and therefore a permanent solution is needed, with advice on a good, enduring and attractive solution being requested from the Highways department.</i> <i>There needs to be a permanent replacement of the temporary signage by the Market Place pedestrian refuge, which reflects the importance of the aesthetic value of having good quality signs in this prominent location.</i>	DM asked if this was LHFIG's or Maintenance's responsibility. GR said that Maintenance would replace with most cost effective solution. If Devizes TC want a more attractive solution, then LHFIG could do that. KN asked about the new 20mph limit and would the island need any marker and GR said that there does need to be a sign on the island. He gave an estimate of £1-1,200. RO wanted something substantial that would not be knocked down. He was happy with GR's description. RO confirmed Devizes TC's contribution.	In Progress
	f)	6-22-21	<i>To apply to LHFIG for help with costs towards the fittings/infrastructure for a Speed Indicator Device.</i>	RJ confirms this is a duplication.	To be removed

		<p>Rowde</p> <p>NAL / Posts for SIDs</p> <p>1st Meeting Date 05/07/2022</p>	<p><i>It is proposed that the SID will rotate between two of the active Community Speedwatch sites and a third site, which has been identified and confirmed through a recent metrocount.</i></p>		
	g)	<p>6-22-23</p> <p>Easterton Kings Road</p> <p>Traffic Calming Extension</p> <p>1st Meeting Date 05/07/2022</p>	<p><i>The 20mph speed limit area for lower Kings Rd commences on a curve level with the upper property boundary of No.2 Kings Road although the first traffic calming 'cushion' is some 35m downhill concealed around the curve.</i></p> <p><i>Install a further traffic calming cushion as near as possible to the upper 20mph signage.</i></p>	<p>CS requested a new speed cushion closer to the beginning of the 20mph zone. There was discussion about the use of Kings Rd and whether a new cushion is necessary. GR gave a cost of approx. £20,000. DM asked if this would be a good investment of LHFIG funds? CS acknowledged this could be removed</p>	To be removed
	h)	<p>6-22-24</p> <p>Easterton B3098</p> <p>Bus Stop Improvements</p> <p>1st Meeting Date 05/07/2022</p>	<p><i>The bus stop outside Halstead Farmhouse is located on a raised and rounded grassed stream bank. The height of the bank proves difficult for anyone with special access requirements to negotiate safely, especially in wet weather.</i></p> <p><i>A] construction of a dedicated alighting platform with an associated drop kerb</i></p> <p><i>Or</i></p> <p><i>B] Move the bus stop to the other side of the junction with Kings Rd where the existing footway is eminently suitable and has been unofficially used by sympathetic bus drivers considerate for their passengers ability</i></p>	<p>Of the 2 options given in the request, B is better / easier. GR asked if there is any infrastructure needed, such as dropped or raised kerbs. CS says there is not those present. GR will raise this with Passenger Transport Unit. CS to send GR some photos of the location</p>	Awaiting update (awaiting photos of site)
		<p>6-22-22</p> <p>Little Cheverell B3098</p>	<p><i>We would like to request a speed limit review for the length of the B3098 which runs through the village of Little Cheverell. Approaching from the Westbury direction, the speed limit is 40mph. It decreases to 30 mph at the corner where School Lane joins the road from the left. It stays at 30 mph for the remainder of the road as far as the junction with the A360. Local residents believe that the traffic travels through the village on the B3098 at speeds in excess of the statutory limits for this road. We are requesting metro</i></p>	<p>SI had technical issues and could not be heard</p>	Awaiting update (description from PC)

		Speed Limit Assessment 1st Meeting Date 05/07/2022	<i>counts in to ascertain if this perception is correct. The request for a speed limit review has arisen because there are now young families who live in row of houses alongside the B3098 within the 40mph. The speeds of cars as people come out of their homes is making crossing the road hazardous. In addition, there are now children who need to cross the road in the mornings to catch the school bus and in the afternoons, when they are dropped off.</i>		
	9.		Other items		
	a)	AoB			
	10 .		Dates of next meetings: 4th October 10.00am to be held via M.S. Teams 17th January, 2023		



Devizes Air Quality and Transport Strategy Group Meeting

Thursday 18th August 2022, St James Centre, Devizes

Notes:

Present: Cllr Tamara Reay (Chair), Andrew Jack, Jason Salter (Wiltshire Council); Richard Ormerod (Sustainable Devizes); Martin Read, Catherine Reed (Cycle Friendly Devizes); Cllr Ted East (Devizes TC); Jasper Selwyn (Devizes Passengers' Group); Cllr Eric Clark (Bishops Cannings PC)

Item	Notes	Action
1. Apologies	Martin Aldam,(Wiltshire Council); Philippa Morgan (Trust for Devizes)	
2. Notes of last meeting 9 th May 2022	Any comments on the notes were picked up during the meeting at the appropriate section. CR asked about the progress of the new 20mph limits for various roads within Devizes town centre. AJ described that all the roads assessed were found suitable for a new 20mph limit. At the last LHFIG meeting in July there was discussion on whether to progress the roads at once (better value but more upheaval for users) or to take clusters of roads separately. Funding has been agreed with LHFIG and Devizes TC to progress all at once. These changes need to be advertised and if there are any objections, a report to the Cabinet member prepared. If no objections, design work can go ahead so that costs of implementation can be agreed at the next LHFIG meeting in October.	
3. Air Quality Data	Gary Tomsett from Wiltshire Council Public Protection was not at the meeting to discuss AQ figures or progress with Wiltshire's AQ Action Plan.	
4. Finance	<p>MA had prepared details of the AQ budgets: £443,464 Discretionary Sustainable Transport £534,969 Public Transport £ 64,870 Highways (Shane's Castle) £ -3,415 s-Paramics Modelling</p> <p>£1,039,887 Total</p> <p>EC described that Bishops Cannings PC has s106 funding towards improvement work to the canal towpath out to Bishops Cannings. He asked if this funding was included in MA's figures? AJ could not answer that and would have to go to MA. EC will provide details of this s106 funding to help identify it.</p> <p>EC spoke further about improvements to the towpath and the development of it as a benefit to the new Berkeley development. Their travel plan does not include any use of the towpath for employees to access the site. Improvements to the towpath would greatly benefit them and could be included in their travel plan. If this is the case, Berkeley could be approached for a financial contribution towards this work. EC pointed out the draft LCWIP</p>	<p>AJ EC</p>

	<p>does not include any work to this section of towpath.</p> <p>RO has looked at the s106 agreement for the two planned residential developments and the new health centre at Marshall Rd.</p> <p>JSa talked about how Passenger Transport Unit (PTU) manages s106 funding and agreed it could be better. He said they are developing a new way of looking at how to use and deal with s106 contributions.</p>	
<p>5. Buses</p>	<p>RO discussed his interested in services to Marshall Rd and the gap in service in mid-afternoon and following reduced service for the rest of the afternoon. He described the need to plug this gap for users of the treatment centre and integrated care centre (ICC). He pointed out the recent survey carried out by Wiltshire Healthwatch looking at how the public wanted to access the new centre. RO felt the comments are misleading about the way results are reported. He also pointed out the new integrated care centre appears not to have raised any CIL. He had looked at other possible sources of funding to deal with the gap in service and there are two new developments planned for the south side of Marshall Rd. RO described attending a recent Wiltshire Council strategic planning meeting and discussions there about the need for sustainable travel to these sites. He pointed out planning officers (development managers) did not seem to be aware of these plans.</p> <p>There was a question to JSa about what integration there is between the Integrated Care Board (ICB) and planning. JSa responded that this does not integrate very well with PTU. Travel plans had not been submitted and this had been referred to planning enforcement to take further, however the building has already been built. Central government has given PTU more resource into the team, including a new officer with a more strategic angle, who will co-ordinate the new demand-responsive bus service in Pewsey Vale. JSa showed a map of the town bus route and explained how PTU tries to integrate routes with the school bus service to maximise usage. JSa felt Devizes has quite a good service but recognised this gap in the afternoon. There is funding to improve the situation but the problem is down to lack of drivers and Faresaver will soon be at capacity for their drivers. The new Pewsey Vale service will come into Devizes and stop at the health centre on the way in, turn at the market place and stop at the health centre again on the way out and do this 7 times per day, which will help with the situation.</p> <p>JSa has a meeting planned with JSe to go over buses and timetables. TR asked if anyone else was interested – RO was. EC asked about Laywood: he has met with Phil Grocock about changes and would like a timescale to be able to go back to his residents with. JSa thought the new staff would be able to do this and offered to provide this to the group by w/c 22nd Aug and for staff to attend the next AQ meeting.</p> <p>TR was worried how the travel plan for the ICC could be missed. JSa pointed out that was for Alan Creedy and the Transport Planning Team but that he felt he was able to help with</p>	<p>JSa</p>

	<p>improvements.</p> <p>JSe pointed out that when Laywood was being proposed, this group wanted buses to go into the estate to encourage residents to use them from day one. JSe said how the new ICC seems to be encouraging people to drive by promoting the number of parking spaces over other methods of transport (64 cars vs. 14 cycle spaces); the ICC estimates peak parking will be between 2.00 and 4.00pm. EC agrees with this and raised similarity with Berkeley site and potential 800 employees. JSa suggested getting someone from Planning along to talk about wider sight of upcoming developments and the transport planning needs of those.</p>	
<p>7. LCWIP</p>	<p>EC described how Bishops Canning PC had been in touch with Canals & Rivers Trust about the proposed work to the towpath – CRT was excited at being able to cover this section. Both were keen to progress. ES did not want to wait for the LCWIP to be amended to cover this in order to access any potential funding. TR asked the group how this opportunity sat with them.</p> <p>EC was keen to approach Berkeley for s106 funding towards the scheme, which would help their travel plan. He wanted to know the background and how different groups, like PCs, this group and LCWIP overlap, etc.</p> <p>RO commented in favour and gave no objections from Devizes TC, which TE confirms. TR was reluctant to give the full go-ahead to EC without seeing the full LCWIP and seeing how this towpath work would fit with other ideas within the plan. There was an LCWIP meeting on Friday 19th and TR is pressing Martin Aldam for a closer timeline.</p> <p>RO asked about a cycle route to the proposed Devizes Gateway rail station. MR replied that there is a route on the map for this but without 100% confirmation of the new station, it is not called that as such.</p> <p>MR described how the LCWIP identifies desire lines or routes to get people to where they want to go. How this happens is then worked out and designed in future. For example, the route to the proposed Gateway location is on the A342, without necessarily using the road itself – the former rail route could be used or land acquired to build a new cycle lane beside the road.</p> <p>CR said how this is the beginning of the process and discussions. Cycle Friendly Devizes carried out consultation on the LCWIP at the Sustainability Day and in the Corn Exchange on several days. 100% of the people spoken to wanted improved cycling facilities. Once the final draft of the LCWIP is prepared it will need to be consulted upon. It could be 100% finalised by the end of the year but she did not know how the adoption process with Wiltshire Council worked. CR said how not all the schemes within the LCWIP are expensive and some could be resolved by the new 20mph limits within town. Active Travel England fund the larger schemes whereas not all ideas in the LCWIP are expensive but all have to comply to the requirements of LTN 1/20. CR said how Cycle Friendly Devizes are putting a lot of work into this and would like some support from this group.</p> <p>Also that Cycle Friendly Devizes want to put on an event in approx. December to promote cycling and active travel, maybe in the Corn Exchange and want support from this group towards this.</p>	

8. Rail.	TR updated that the Department for Transport will be taking the outline strategic business case further and has release another £400k in funding towards further feasibility studies. This will especially look at timetabling issues and other considerations like land, access and ownership at Lydney. This work will be Network Rail-led with DfT involvement. Wiltshire Council officers have been very involved so far. Devizes TC and Devizes Development Partnership are represented by TR within this work. Studies will also look at Westbury station, which is key for east-west and north-south access on this rail network.	
9. EV Charging Points	<p>TR said how as Portfolio Holder, she has been pushing for on this. Wiltshire Council has an interim EV Charging Policy and there will be an EVCP webinar run by Wiltshire Council on 14th September. Work is ongoing to replace the existing units, install new units in smaller towns and provide grants to town & parish councils to install their own new EVCPs.</p> <p>Electric Vehicle Charging Points webinar September 14th at 5.30pm on Teams An opportunity to learn more about Wiltshire Council’s approach to electric vehicle (EV) charging infrastructure</p> <ul style="list-style-type: none"> • Current EV charging infrastructure plan • Next EV strategy • Grants and the Office of Low Emissions Vehicles (OLEV) process • An opportunity to ask questions and understand how to overcome any barriers <p>Please email climate@wiltshire.gov.uk to book a place on the webinar and receive the link</p>	
10. Car Clubs	<p>Following previous discussion about bringing a new EV car club to Devizes, AJ and TR held a meeting with Mark Hodgson, Director at Co Cars. After describing Devizes, the situation here and this group, Mark was very happy to explore Co Cars bringing a club to the town. He described the starting point as an online survey to explore potential use and new users. To increase the range of the survey, this could also be made available in hard copy. TR and AJ agreed to this approach and MH said he would email the survey to AJ. This has still not arrived, so AJ will chase it up.</p> <p>At previous meetings, group members had asked about the financial risk of any local investment into a new car club. AJ asked this to MH. He described how as part of setting up the club, new EV chargers will be installed and operated by a 3rd party company. If the car club was to fold, the chargers will still be available to EV owners, so the legacy of the local funding would be these additional charging points.</p>	AJ
11. AOB	There was further discussion about the results of Healthwatch’s survey about travel to the new care centre.	
Next meetings	3 rd November at 2.00pm venue tbc	

Report To	Devizes Area Board
Date of Meeting	Monday, 05 September 2022
Title of Report	Devizes Area Grant Report

Purpose of the Report

- To provide detail of the grant applications made to the Devizes Area Board. These could include; community area grants, health and wellbeing, young person's grants and Area Board initiatives.
- To document any recommendations provided through subgroups.

Area Board Current Financial Position

	Community Area Grants	Young People	Health and Wellbeing
Opening Balance For <u>2022/23</u>	£ 25,869.00	£ 22,320.00	£ 7,700.00
Awarded To Date	£ 15,396.50	£ 4,000.00	£ 3,457.50
Current Balance	£ 10,472.50	£ 18,320.00	£ 4,242.50
Balance if all grants are agreed based on recommendations	£ 2,472.50	£ 10,638.00	£ 3,742.50

Grant Funding Application Summary

Application Reference	Grant Type	Applicant	Project	Total Cost	Requested
ABG729	Community Area Grant	Sustainable Devizes	Devizes Community Fridge	£1500.00	£750.00
<p>Project Summary: We plan to launch a Community Fridge in Devizes in August this year. The project has existing agreement from the Town Council to be sited in the Shambles. It is led by Sustainable Devizes in partnership with Wiltshire CIL. Financial and insurance oversight will be from Sustainable Devizes, and we aim to be compliant with the advised policies and protocols of the national Community Fridge Network (Hubbub.co.uk) and to be a registered member of it. We currently have 22 volunteers signed up to prepare for the launch but just need match funding of £800 to purchase a catering standard display fridge.</p> <p>This funding has already been awarded via delegated authority. It needs to be ratified at this meeting</p>					

ABG746	Community Area Grant	Cycle Friendly Devizes	New Gazebo to promote sustainable travel options	£500.00	£500.00
<p>Project Summary: CFD team are increasingly getting involved in the community to promote cycling and sustainable travel around Devizes area. Last year we attended the Well Being event on the Green and have participated in the inaugural Sustainability Fair in the Market Place, which was successful and destined to become an annual event. At the fair, our CFD team were in attendance to encourage participation in LCWIP consultation, promote the new cycle stands in the Market Place and organised public guided rides around town showing them the cycle routes. Additionally, we ran a cyclometer where the public participated in a cycle related survey. At these events, we borrowed large tent, which is not available for the future. Having a purpose made pop up gazebo would allow us to participate in more local events, where we can promote active/sustainable travel and any initiatives, which will reduce carbon emissions and improve air quality in Devizes. The gazebo would be available to share within the Sustainable Devizes group, or other community groups.</p>					
ABG771	Community Area Grant	Devizes Development Partnership Ltd	Devizes CCTV	£5025.23	£2500.00
<p>Project Summary: Replacement of data transmission and installation of new camera equipment</p>					
ABG778	Community Area Grant	Devizes Assize Court Trust	Planning for the Future of Devizes Assize Court	£338906.00	£5000.00
<p>Project Summary: DACT has acquired the former Assize Courts to rescue an important historic building and provide an exciting new venue for the Wiltshire Museum. The building has been disused and neglected over the last 30+ years and is seriously at risk. Emergency repairs have been undertaken with grant aid from Historic England and the Pilgrim Trust but the building remains fragile. To undertake the project DACT is working with the Wiltshire Archaeological and Natural History Society that runs the existing Wiltshire Museum in Devizes, and with support from the Wiltshire Historic Buildings Trust. We have completed the feasibility stage and now have outline plans to demonstrate how the restored building will enable the relocation of the Wiltshire Museum from its present site in the town. Investigations undertaken to date highlights the need for extensive conservation of the fabric of the building. To achieve a viable new use we need to conserve, convert and extend the building so that it can provide the space and facilities needed to accommodate an enhanced Wiltshire Museum. ADD in here The main items of capital work required are: • Conservation and conversion of the historic building • A new extension • External works to enhance the setting and provide for disabled access • Fitting out of the exhibition spaces • Provision of a new café • Plus all professional fees to enable completion the above. The Assize Courts is located within the Devizes Wharf Area where there is an ongoing Wiltshire Council led regeneration study in progress. This has already identified the Assize Court as a catalyst to bring new life to the Devizes Wharf area and support the town's economy. The Wharf regeneration study covers 6.75 hectares and includes: 1. The Lower Wharf – the Assize Court and Wadsworth Brewery are dominant buildings on Northgate Street and an important part of the town's history and identity. The Brewery Visitor Centre and Assize Court will be linked by a new canalside path to the Central Wharf and its coach park. 2. The Central Wharf - characterised by recreational access to the Canal, boat moorings, public open space and the Wharf Theatre building. It will exploit the recreational potential of the Canal and attracting visitors from the town centre. 3. The Upper Wharf - a stronger community character, dominated by the church and the hospital buildings that will be redundant by 2023. Plans have been developed to create a residential community with a strong local character and identity, within easy walking distance of the shops and leisure facilities of the town centre. 4. New Park Street – enhancing and integrating this with the town centre by creating a linked network of streets and spaces from the Market Square to the Wharf. Initial proposals for the redevelopment of the 3.8-hectare Wadsworth Brewery site, which sits alongside the Assize Court, are for mixed uses including, commercial, residential and leisure, linked by a network of pedestrian routes and public spaces. The retention and reuse of the historic brewery and other listed buildings on the site will add to the vitality and interest of the town as it seeks to respond positively to the new challenges of climate change and the post-covid economy.</p>					

ABG728	Older and Vulnerable Adults Funding	Devizes Rotary	HWB Showcase 2022	£2275.14	£500.00
<p>Project Summary: HWB Showcase 2022 will be the fourth free community event aimed at making connections between the adult community and organisations, clubs, groups and charities who provide health and well-being services and activities throughout the Devizes Community Area. It will take place on the Small Green in Devizes on Saturday 10th September 2022 from 11am to 3pm. The event will again be open to exhibitors and demonstrators of activities such as arts & crafts, exercise, singing & dancing, and there will be a number of sideshows encouraging people to have a go at things such as skittles, coconut shy, football shooting practice, golf putting practice, bean bag throwing, mat darts etc.</p>					
ABG283	Youth Grant	Bromham Youth Club	Bromham Youth club	£5365.00	£2682.00
<p>Project Summary: A one evening per week successful youth club for young people aged 11-18 from the local Bromham community. We have members from Devizes School, Melksham Oak, Kingsbury Green, Dauntsey School and Abbeyfield School attending. Also, for those up to age 25 with additional needs and disabilities. The club enable's young people to socialise, have new experiences, learn new skills, keep physically active and take part in new activities that include themed youth sessions educational workshops and trips. This is a successful club that currently has between 16 and 20 members sign in weekly. The club also continued to run online during the Covid Pandemic and lockdowns. There is nothing else in Bromham club wise for young people. The club lost it's home and all possessions in 2021 when Bromham Social Centre burned down. The youth club is applying for running costs to enable the club to keep running from September 2022.</p>					
ABG717	Youth Grant	West Lavington Youth Club	West Lavington Youth Centre	£15072.00	£5000.00
<p>Project Summary: The Youth Centre aims to engage with children from the Lavingtons and surrounding areas in positive activities. The youth centre has a dual purpose. It will raise the aspirations of children who are already succeeding and it will also engage children who are, for whatever reason, not currently engaged with any form of provision, NETE for example. For the former, the centre is a luxury item to make already good lives better and for the latter it is a resource designed to fill the gaping whole in Wiltshire Council's early help provision caused by years of austerity. It will provide a service to the generation of children who have been abandoned by public services. It is a service for the children who are in need, but not needy enough to qualify for statutory services. It is the informal contact that will act as a sliding door moment for children and prevent them growing up and entering into a lifetime of criminality and/or addiction. It is the father figure for the boys who live in a man dessert.</p>					

ABG738	Youth Grant	Wiltshire County Football Association	Devizes youth football project	£2500.00	£1000.00
<p>Project Summary: Wiltshire County FA held a meeting with Devizes Community Policing Team to discuss working together to address the biggest problem they were facing in the community. It was established that anti-social behavior was a big problem in Devizes, mainly due to the lack of facilities to engage young people in a positive activity. In addition to this, young people from deprived backgrounds are not given the same opportunities as those from a more affluent background. Together with partner agencies we would like to set up a youth project engaging young people in positive engagement through football. Green Lane has huge 3G pitches to facilitate this project. We also have a large canteen area which can be used, this could also be useful for agencies such as YOT to have meetings. *Initially, the project will run for 15 weeks with the possibility of extension based on success. *If talent is observed, WCFA can provide pathways into clubs, qualifications such as coaching and referee courses and opportunities *By doing this it will enable young people to engage in positive activities *If positive the aim is to reduce ASB in Devizes *Young people will also be able to build positive relationships with barrier services such as the police. *Launch the project on Friday 5th August 2022.</p> <p>This funding has already been awarded via delegated authority. It needs to be ratified at this meeting</p>					

1. Background

Area Boards have authority to approve funding under powers delegated to them. Under the Scheme of Delegation Area Boards must adhere to the Area Board Funding and Grants Criteria. This document is available on the council's website.

Three funding streams are available to the Area Board, each with an annually awarded amount. These funding streams are as follows:

- ◆ Community Area Grants (capital)
- ◆ Young People (revenue)
- ◆ Health and Wellbeing (revenue)

The Area Board will be advised of the funding available prior to their first meeting of each financial year.

2. Main Considerations

2.1. Councillors need to be satisfied that the applications meet the requirements as set out in the Area Board Funding and Grants Criteria and that the health and wellbeing and young person's funding guidelines have been adhered to.

2.2. Councillors must ensure that the distribution of funding is in accordance with the Scheme of Delegation to Area Boards.

2.3. Councillors need to consider any recommendations made by subgroups of the Area Boards.

3. Environmental & Community Implications

Grant funding will contribute to the continuance and/or improvement of cultural, social and community activity and wellbeing in the community area, the extent of which will be dependent upon the individual project.

4. Financial Implications

Councillors must ensure that the Area Board has sufficient funding available to cover the grants awarded.

5. Legal Implications

There are no specific legal implications related to this report.

6. Human Resources Implications

There are no specific human resources implications related to this report.

7. Equality and Inclusion Implications

Community Area Boards must fully consider the equality impacts of their decisions in order to meet the Council's Public Sector Equality Duty.

Community Area Grants will give local community and voluntary groups, Town and Parish Council's equal opportunity to receive funding towards community-based projects and schemes where they meet the funding criteria.

8. Safeguarding Implications

The Area Board has ensured that the necessary policies and procedures are in place to safeguard children, young people and vulnerable adults.

No unpublished documents have been relied upon in the preparation of this report.

Report Author

Andrew Jack, Community Engagement Manager, Andrew.Jack@wiltshire.gov.uk

